



**ELECTRONIC COPY**

LG788684663  
Report verification at igi.org



April 20, 2026  
IGI Report Number **LG788684663**  
Description **LABORATORY GROWN DIAMOND**  
Shape and Cutting Style **SQUARE CUSHION MODIFIED BRILLIANT**  
Measurements **7.61 X 7.53 X 5.47 MM**  
**GRADING RESULTS**  
Carat Weight **2.55 CARATS**  
Color Grade **FANCY DEEP PINK**  
Clarity Grade **VS 1**

April 20, 2026  
IGI Report Number **LG788684663**  
Description **LABORATORY GROWN DIAMOND**  
Shape and Cutting Style **SQUARE CUSHION MODIFIED BRILLIANT**  
Measurements **7.61 X 7.53 X 5.47 MM**

**GRADING RESULTS**

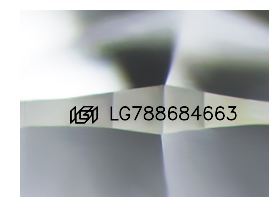
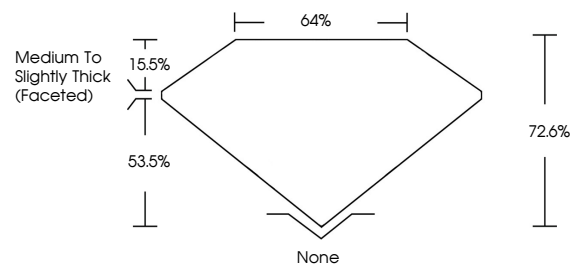
Carat Weight **2.55 CARATS**  
Color Grade **FANCY DEEP PINK**  
Clarity Grade **VS 1**

**ADDITIONAL GRADING INFORMATION**

Polish **EXCELLENT**  
Symmetry **EXCELLENT**  
Fluorescence **VERY SLIGHT**  
Inscription(s) **IGI LG788684663**

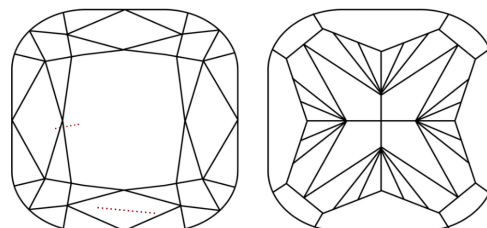
Comments: This Laboratory Grown Diamond was created by Chemical Vapor Deposition (CVD) growth process. Indications of post-growth treatment.

**PROPORTIONS**



Sample Image Used

**CLARITY CHARACTERISTICS**



**KEY TO SYMBOLS**

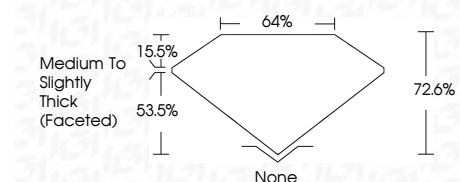
Red symbols indicate internal characteristics.  
Green symbols indicate external characteristics.

**COLOR**

D E F G H I J Faint Very Light Light

**CLARITY**

FL	IF	VS <sup>1-2</sup>	VS <sup>1-2</sup>	SI <sup>1-2</sup>	I <sup>1-3</sup>
Flawless	Internally Flawless	Very Very Slightly Included	Very Slightly Included	Slightly Included	Included



**ADDITIONAL GRADING INFORMATION**

Polish **EXCELLENT**  
Symmetry **EXCELLENT**  
Fluorescence **VERY SLIGHT**  
Inscription(s) **IGI LG788684663**  
Comments: This Laboratory Grown Diamond was created by Chemical Vapor Deposition (CVD) growth process. Indications of post-growth treatment.



April 20, 2026  
IGI Report No. LG788684663  
**SQUARE CUSHION MODIFIED BRILLIANT**  
2.55 CARATS  
FANCY DEEP PINK  
VS 1  
7.61 X 7.53 X 5.47 MM  
72.6%  
64%  
Medium to Slightly Thick (Faceted)  
None  
EXCELLENT  
EXCELLENT  
VERY SLIGHT  
IGI LG788684663  
Comments: This Laboratory Grown Diamond was created by Chemical Vapor Deposition (CVD) growth process. Indications of post-growth treatment.