



ELECTRONIC COPY

LG788684565
Report verification at igi.org



April 18, 2026
IGI Report Number **LG788684565**
Description **LABORATORY GROWN DIAMOND**
Shape and Cutting Style **SQUARE CUSHION MODIFIED BRILLIANT**
Measurements **10.91 X 10.43 X 6.87 MM**
GRADING RESULTS
Carat Weight **7.58 CARATS**
Color Grade **FANCY VIVID RED**
Clarity Grade **VVS 2**

April 18, 2026
IGI Report Number **LG788684565**
Description **LABORATORY GROWN DIAMOND**
Shape and Cutting Style **SQUARE CUSHION MODIFIED BRILLIANT**
Measurements **10.91 X 10.43 X 6.87 MM**

GRADING RESULTS

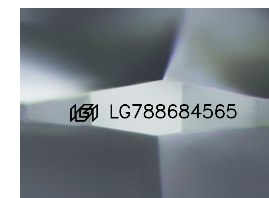
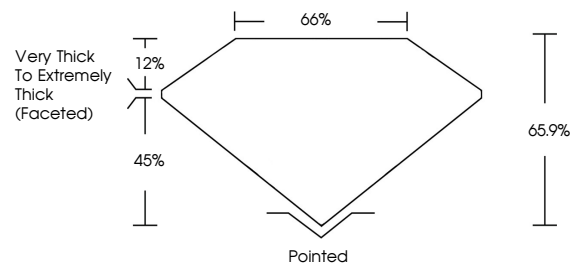
Carat Weight **7.58 CARATS**
Color Grade **FANCY VIVID RED**
Clarity Grade **VVS 2**

ADDITIONAL GRADING INFORMATION

Polish **EXCELLENT**
Symmetry **EXCELLENT**
Fluorescence **SLIGHT**
Inscription(s) **IGI LG788684565**

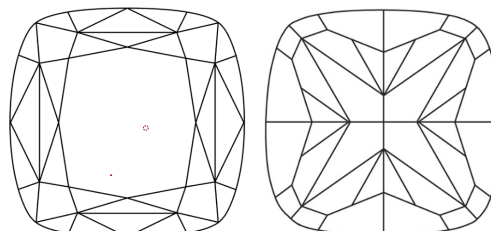
Comments: This Laboratory Grown Diamond was created by Chemical Vapor Deposition (CVD) growth process. Indications of post-growth treatment.

PROPORTIONS



Sample Image Used

CLARITY CHARACTERISTICS



KEY TO SYMBOLS

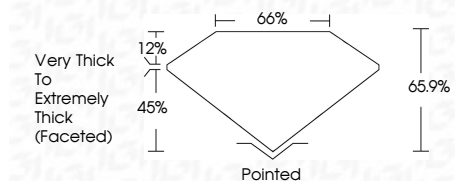
Red symbols indicate internal characteristics.
Green symbols indicate external characteristics.

COLOR

D E F G H I J Faint Very Light Light

CLARITY

FL	IF	VVS ¹⁻²	VS ¹⁻²	SI ¹⁻²	I ¹⁻³
Flawless	Internally Flawless	Very Very Slightly Included	Very Slightly Included	Slightly Included	Included



ADDITIONAL GRADING INFORMATION

Polish **EXCELLENT**
Symmetry **EXCELLENT**
Fluorescence **SLIGHT**
Inscription(s) **IGI LG788684565**
Comments: This Laboratory Grown Diamond was created by Chemical Vapor Deposition (CVD) growth process. Indications of post-growth treatment.



April 18, 2026
IGI Report No **LG788684565**
SQUARE CUSHION MODIFIED BRILLIANT
10.91 X 10.43 X 6.87 MM
Carat Weight **7.58 CARATS**
Color Grade **FANCY VIVID RED**
Clarity Grade **VVS 2**
Depth **65.9%**
Table **66%**
Girdle **Very Thick to Extremely Thick (Faceted)**
Culet **Pointed**
Polish **EXCELLENT**
Symmetry **EXCELLENT**
Fluorescence **SLIGHT**
Inscription(s) **IGI LG788684565**
Comments: This Laboratory Grown Diamond was created by Chemical Vapor Deposition (CVD) growth process. Indications of post-growth treatment.