



ELECTRONIC COPY

LG788684544
Report verification at igi.org



April 20, 2026
IGI Report Number **LG788684544**
Description **LABORATORY GROWN DIAMOND**
Shape and Cutting Style **SQUARE CUSHION MODIFIED BRILLIANT**
Measurements **5.66 X 5.57 X 3.65 MM**
GRADING RESULTS
Carat Weight **1.03 CARAT**
Color Grade **FANCY INTENSE PINK**
Clarity Grade **VS 2**

April 20, 2026
IGI Report Number **LG788684544**
Description **LABORATORY GROWN DIAMOND**
Shape and Cutting Style **SQUARE CUSHION MODIFIED BRILLIANT**
Measurements **5.66 X 5.57 X 3.65 MM**

GRADING RESULTS

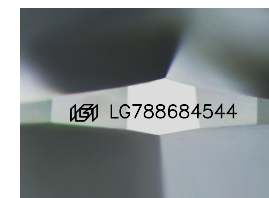
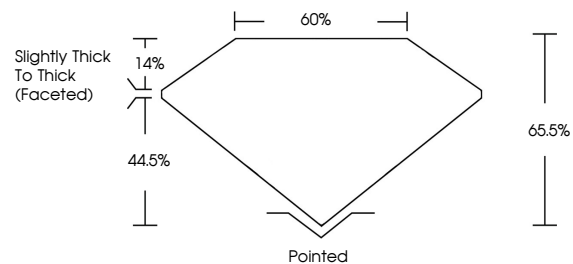
Carat Weight **1.03 CARAT**
Color Grade **FANCY INTENSE PINK**
Clarity Grade **VS 2**

ADDITIONAL GRADING INFORMATION

Polish **EXCELLENT**
Symmetry **EXCELLENT**
Fluorescence **SLIGHT**
Inscription(s) **IGI LG788684544**

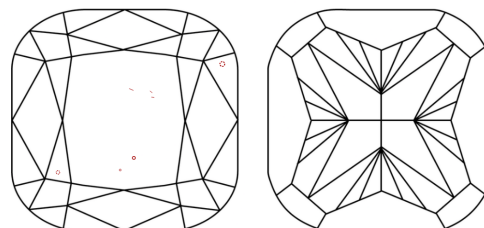
Comments: This Laboratory Grown Diamond was created by Chemical Vapor Deposition (CVD) growth process. Indications of post-growth treatment.

PROPORTIONS



Sample Image Used

CLARITY CHARACTERISTICS



KEY TO SYMBOLS

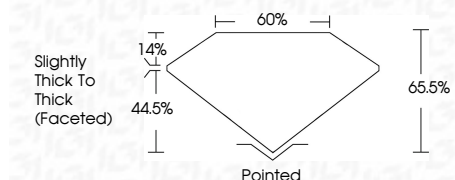
Red symbols indicate internal characteristics.
Green symbols indicate external characteristics.

COLOR

D E F G H I J Faint Very Light Light

CLARITY

FL	IF	VS ¹⁻²	VS ¹⁻²	SI ¹⁻²	I ¹⁻³
Flawless	Internally Flawless	Very Very Slightly Included	Very Slightly Included	Slightly Included	Included



ADDITIONAL GRADING INFORMATION

Polish **EXCELLENT**
Symmetry **EXCELLENT**
Fluorescence **SLIGHT**
Inscription(s) **IGI LG788684544**
Comments: This Laboratory Grown Diamond was created by Chemical Vapor Deposition (CVD) growth process. Indications of post-growth treatment.



April 20, 2026
IGI Report No LG788684544
SQUARE CUSHION MODIFIED BRILLIANT
1.03 CARAT
FANCY INTENSE PINK
VS 2
5.66 X 5.57 X 3.65 MM
EXCELLENT
EXCELLENT
SLIGHT
IGI LG788684544
Comments: This Laboratory Grown Diamond was created by Chemical Vapor Deposition (CVD) growth process. Indications of post-growth treatment.