



ELECTRONIC COPY

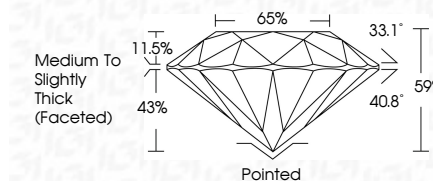
LG788684541
Report verification at igi.org



April 20, 2026
IGI Report Number **LG788684541**
Description **LABORATORY GROWN DIAMOND**
Shape and Cutting Style **ROUND BRILLIANT**
Measurements **6.46 - 6.49 X 3.82 MM**

GRADING RESULTS

Carat Weight **1.00 CARAT**
Color Grade **FANCY PINK**
Clarity Grade **VS 1**
Cut Grade **VERY GOOD**

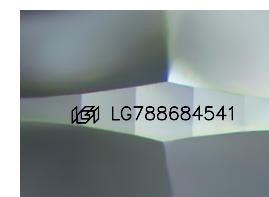


ADDITIONAL GRADING INFORMATION

Polish **VERY GOOD**
Symmetry **VERY GOOD**
Fluorescence **SLIGHT**
Inscription(s) **(IGI) LG788684541**
Comments: This Laboratory Grown Diamond was created by Chemical Vapor Deposition (CVD) growth process. Indications of post-growth treatment.

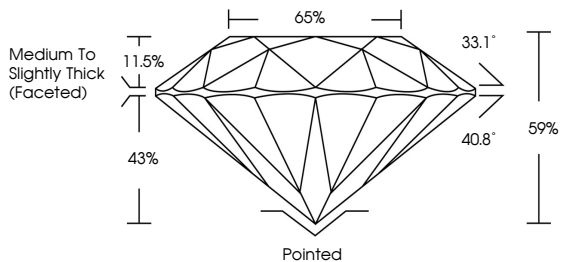


April 20, 2026
IGI Report No LG788684541
ROUND BRILLIANT
1.00 CARAT
FANCY PINK
Color Grade
VS 1
Clarity Grade
VERY GOOD
Cut Grade
VERY GOOD
Depth
59%
Table
65%
Girdle
Medium To Slightly Thick (Faceted)
Culet
Pointed
Polish
VERY GOOD
Symmetry
VERY GOOD
Fluorescence
SLIGHT
Inscription(s)
(IGI) LG788684541
Comments: This Laboratory Grown Diamond was created by Chemical Vapor Deposition (CVD) growth process. Indications of post-growth treatment.

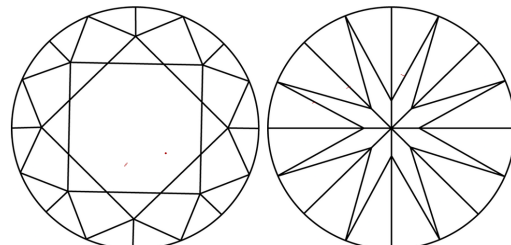


Sample Image Used

PROPORTIONS



CLARITY CHARACTERISTICS



KEY TO SYMBOLS

Red symbols indicate internal characteristics.
Green symbols indicate external characteristics.

COLOR

D	E	F	G	H	I	J	Faint	Very Light	Light
---	---	---	---	---	---	---	-------	------------	-------

CLARITY

FL	IF	VS ¹⁻²	VS ¹⁻²	SI ¹⁻²	I ¹⁻³
Flawless	Internally Flawless	Very Very Slightly Included	Very Slightly Included	Slightly Included	Included



April 20, 2026
IGI Report Number **LG788684541**
Description **LABORATORY GROWN DIAMOND**
Shape and Cutting Style **ROUND BRILLIANT**
Measurements **6.46 - 6.49 X 3.82 MM**

GRADING RESULTS

Carat Weight **1.00 CARAT**
Color Grade **FANCY PINK**
Clarity Grade **VS 1**
Cut Grade **VERY GOOD**

ADDITIONAL GRADING INFORMATION

Polish **VERY GOOD**
Symmetry **VERY GOOD**
Fluorescence **SLIGHT**
Inscription(s) **(IGI) LG788684541**

Comments: This Laboratory Grown Diamond was created by Chemical Vapor Deposition (CVD) growth process. Indications of post-growth treatment.