



ELECTRONIC COPY

LG788684164
Report verification at igi.org



April 21, 2026
IGI Report Number **LG788684164**
Description **LABORATORY GROWN DIAMOND**
Shape and Cutting Style **MARQUISE MODIFIED BRILLIANT**
Measurements **12.72 X 6.33 X 4.04 MM**
GRADING RESULTS
Carat Weight **2.18 CARATS**
Color Grade **FANCY INTENSE YELLOW**
Clarity Grade **VS 1**

April 21, 2026
IGI Report Number **LG788684164**
Description **LABORATORY GROWN DIAMOND**
Shape and Cutting Style **MARQUISE MODIFIED BRILLIANT**
Measurements **12.72 X 6.33 X 4.04 MM**

GRADING RESULTS

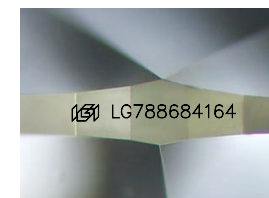
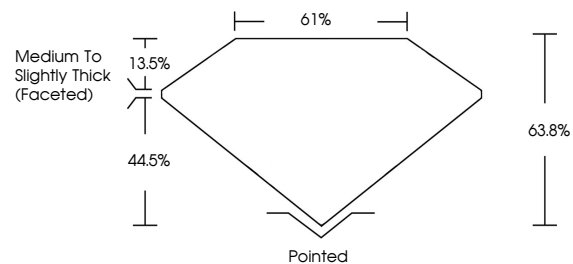
Carat Weight **2.18 CARATS**
Color Grade **FANCY INTENSE YELLOW**
Clarity Grade **VS 1**

ADDITIONAL GRADING INFORMATION

Polish **EXCELLENT**
Symmetry **EXCELLENT**
Fluorescence **NONE**
Inscription(s) **IGI LG788684164**

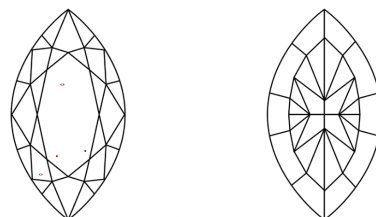
Comments: This Laboratory Grown Diamond was created by Chemical Vapor Deposition (CVD) growth process.

PROPORTIONS



Sample Image Used

CLARITY CHARACTERISTICS



KEY TO SYMBOLS

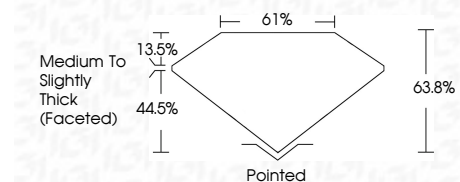
Red symbols indicate internal characteristics.
Green symbols indicate external characteristics.

COLOR

D E F G H I J Faint Very Light Light

CLARITY

FL	IF	VS ¹⁻²	VS ¹⁻²	SI ¹⁻²	I ¹⁻³
Flawless	Internally Flawless	Very Very Slightly Included	Very Slightly Included	Slightly Included	Included



ADDITIONAL GRADING INFORMATION

Polish **EXCELLENT**
Symmetry **EXCELLENT**
Fluorescence **NONE**
Inscription(s) **IGI LG788684164**
Comments: This Laboratory Grown Diamond was created by Chemical Vapor Deposition (CVD) growth process.



IGI



April 21, 2026
IGI Report No **LG788684164**
MARQUISE MODIFIED BRILLIANT
2.18 CARATS
Carat Weight **FANCY INTENSE YELLOW**
Color Grade **VS 1**
Clarity Grade **63.8%**
Depth **61%**
Table **Medium to Slightly Thick (Faceted)**
Girdle **Pointed**
Culet **EXCELLENT**
Polish **EXCELLENT**
Symmetry **NONE**
Fluorescence **NONE**
Inscription(s) **IGI LG788684164**
Comments: This Laboratory Grown Diamond was created by Chemical Vapor Deposition (CVD) growth process.