



ELECTRONIC COPY

LG788684156
Report verification at igi.org



April 21, 2026
IGI Report Number LG788684156
Description LABORATORY GROWN DIAMOND
Shape and Cutting Style SQUARE CUSHION MODIFIED BRILLIANT
Measurements 6.12 X 6.09 X 4.15 MM
GRADING RESULTS
Carat Weight 1.42 CARAT
Color Grade FANCY INTENSE YELLOW
Clarity Grade VVS 2

LABORATORY GROWN DIAMOND REPORT

April 21, 2026
IGI Report Number LG788684156
Description LABORATORY GROWN DIAMOND
Shape and Cutting Style SQUARE CUSHION MODIFIED BRILLIANT
Measurements 6.12 X 6.09 X 4.15 MM

GRADING RESULTS

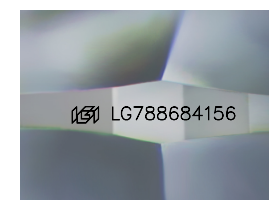
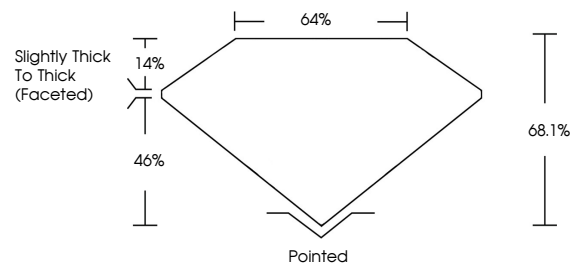
Carat Weight 1.42 CARAT
Color Grade FANCY INTENSE YELLOW
Clarity Grade VVS 2

ADDITIONAL GRADING INFORMATION

Polish EXCELLENT
Symmetry VERY GOOD
Fluorescence NONE
Inscription(s) LG788684156

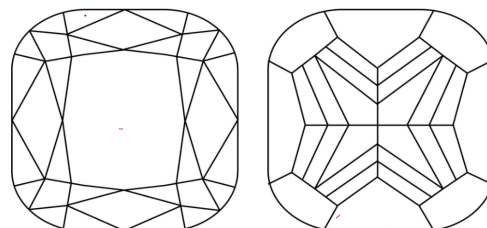
Comments: This Laboratory Grown Diamond was created by Chemical Vapor Deposition (CVD) growth process.

PROPORTIONS



Sample Image Used

CLARITY CHARACTERISTICS



KEY TO SYMBOLS

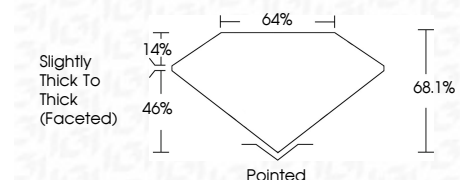
Red symbols indicate internal characteristics.
Green symbols indicate external characteristics.

COLOR

D E F G H I J Faint Very Light Light

CLARITY

FL IF VVS 1-2 VS 1-2 SI 1-2 I 1-3
Flawless Internally Flawless Very Very Slightly Included Very Slightly Included Slightly Included Included



ADDITIONAL GRADING INFORMATION

Polish EXCELLENT
Symmetry VERY GOOD
Fluorescence NONE
Inscription(s) LG788684156
Comments: This Laboratory Grown Diamond was created by Chemical Vapor Deposition (CVD) growth process.



April 21, 2026
IGI Report No LG788684156
SQUARE CUSHION MODIFIED BRILLIANT
1.42 CARAT
FANCY INTENSE YELLOW
VVS 2
6.12 X 6.09 X 4.15 MM
68.1%
46%
Slightly Thick To Thick (Faceted)
Pointed
EXCELLENT
VERY GOOD
NONE
IGI LG788684156
Comments: This Laboratory Grown Diamond was created by Chemical Vapor Deposition (CVD) growth process.