



ELECTRONIC COPY

LG788684041
Report verification at igi.org



April 20, 2026

IGI Report Number **LG788684041**

Description **LABORATORY GROWN DIAMOND**

Shape and Cutting Style **CUT CORNERED
RECTANGULAR MODIFIED
BRILLIANT**

Measurements **7.97 X 5.55 X 3.66 MM**

GRADING RESULTS

Carat Weight **1.44 CARAT**

Color Grade **FANCY VIVID PINK**

Clarity Grade **SI 1**

LABORATORY GROWN DIAMOND REPORT

April 20, 2026

IGI Report Number **LG788684041**

Description **LABORATORY GROWN DIAMOND**

Shape and Cutting Style **CUT CORNERED RECTANGULAR
MODIFIED BRILLIANT**

Measurements **7.97 X 5.55 X 3.66 MM**

GRADING RESULTS

Carat Weight **1.44 CARAT**

Color Grade **FANCY VIVID PINK**

Clarity Grade **SI 1**

ADDITIONAL GRADING INFORMATION

Polish **EXCELLENT**

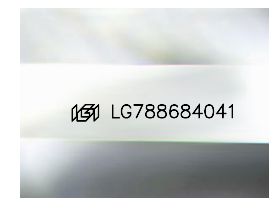
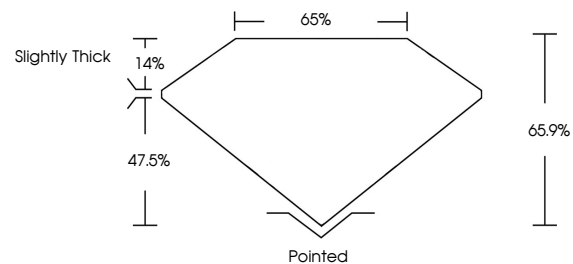
Symmetry **EXCELLENT**

Fluorescence **SLIGHT**

Inscription(s) **IGI LG788684041**

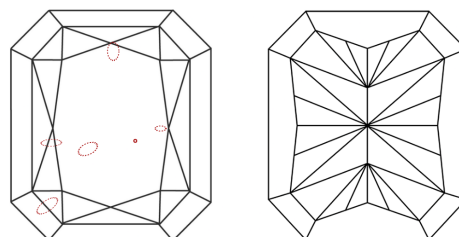
Comments: This Laboratory Grown Diamond was created by Chemical Vapor Deposition (CVD) growth process. Indications of post-growth treatment.

PROPORTIONS



Sample Image Used

CLARITY CHARACTERISTICS



KEY TO SYMBOLS

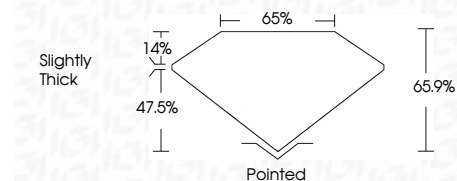
Red symbols indicate internal characteristics.
Green symbols indicate external characteristics.

COLOR

D E F G H I J Faint Very Light Light

CLARITY

FL	IF	VS ¹⁻²	VS ¹⁻²	SI ¹⁻²	I ¹⁻³
Flawless	Internally Flawless	Very Very Slightly Included	Very Slightly Included	Slightly Included	Included



ADDITIONAL GRADING INFORMATION

Polish **EXCELLENT**

Symmetry **EXCELLENT**

Fluorescence **SLIGHT**

Inscription(s) **IGI LG788684041**

Comments: This Laboratory Grown Diamond was created by Chemical Vapor Deposition (CVD) growth process. Indications of post-growth treatment.



April 20, 2026
IGI Report No LG788684041
CUT CORNERED RECT. MODIFIED BRILLIANT

1.44 CARAT
Carat Weight
FANCY VIVID PINK
Color Grade

SI 1
Clarity Grade

7.97 X 5.55 X 3.66 MM
Depth
65%
Table
Slightly Thick
Girdle

Pointed
Culet
EXCELLENT
Polish
EXCELLENT
Symmetry
SLIGHT
Fluorescence
SI 1
Inscription(s)
IGI LG788684041

Comments: This Laboratory Grown Diamond was created by Chemical Vapor Deposition (CVD) growth process. Indications of post-growth treatment.