



ELECTRONIC COPY

LG788683949
Report verification at igi.org



April 20, 2026
IGI Report Number LG788683949
Description LABORATORY GROWN DIAMOND
Shape and Cutting Style PRINCESS CUT
Measurements 7.12 X 6.85 X 4.66 MM
GRADING RESULTS
Carat Weight 2.03 CARATS
Color Grade FANCY VIVID GREEN
Clarity Grade VVS 2

LABORATORY GROWN DIAMOND REPORT

April 20, 2026
IGI Report Number LG788683949
Description LABORATORY GROWN DIAMOND
Shape and Cutting Style PRINCESS CUT
Measurements 7.12 X 6.85 X 4.66 MM

GRADING RESULTS

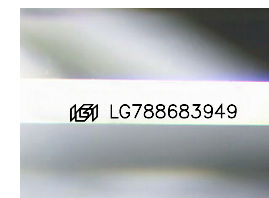
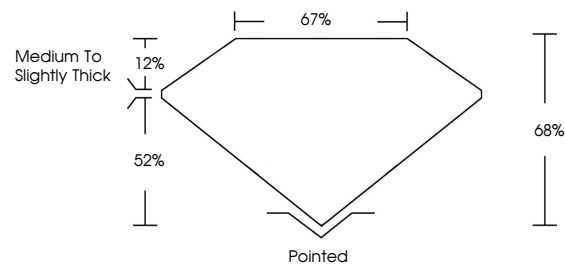
Carat Weight 2.03 CARATS
Color Grade FANCY VIVID GREEN
Clarity Grade VVS 2

ADDITIONAL GRADING INFORMATION

Polish EXCELLENT
Symmetry EXCELLENT
Fluorescence NONE
Inscription(s) IGI LG788683949

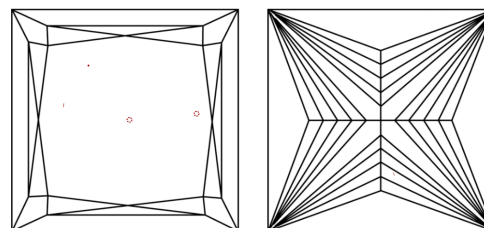
Comments: This Laboratory Grown Diamond was created by Chemical Vapor Deposition (CVD) growth process. Indications of post-growth treatment.

PROPORTIONS



Sample Image Used

CLARITY CHARACTERISTICS



KEY TO SYMBOLS

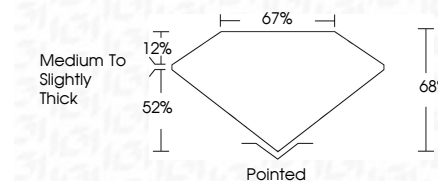
Red symbols indicate internal characteristics.
Green symbols indicate external characteristics.

COLOR

D E F G H I J Faint Very Light Light

CLARITY

FL IF VVS 1-2 VS 1-2 SI 1-2 I 1-3
Flawless Internally Flawless Very Very Slightly Included Very Slightly Included Slightly Included Included



ADDITIONAL GRADING INFORMATION

Polish EXCELLENT
Symmetry EXCELLENT
Fluorescence NONE
Inscription(s) IGI LG788683949
Comments: This Laboratory Grown Diamond was created by Chemical Vapor Deposition (CVD) growth process. Indications of post-growth treatment.



April 20, 2026
IGI Report No. LG788683949
PRINCESS CUT
2.03 CARATS
FANCY VIVID GREEN
VVS 2
7.12 X 6.85 X 4.66 MM
Medium to Slightly Thick
Pointed
EXCELLENT
EXCELLENT
NONE
IGI LG788683949
Comments: This Laboratory Grown Diamond was created by Chemical Vapor Deposition (CVD) growth process. Indications of post-growth treatment.