



**ELECTRONIC COPY**

LG788683654  
Report verification at igi.org



April 14, 2026  
IGI Report Number **LG788683654**  
Description **LABORATORY GROWN DIAMOND**  
Shape and Cutting Style **CUSHION BRILLIANT**  
Measurements **8.67 X 5.10 X 2.95 MM**  
**GRADING RESULTS**  
Carat Weight **1.18 CARAT**  
Color Grade **FANCY VIVID GREEN**  
Clarity Grade **VVS 2**

**LABORATORY GROWN DIAMOND REPORT**

April 14, 2026  
IGI Report Number **LG788683654**  
Description **LABORATORY GROWN DIAMOND**  
Shape and Cutting Style **CUSHION BRILLIANT**  
Measurements **8.67 X 5.10 X 2.95 MM**

**GRADING RESULTS**

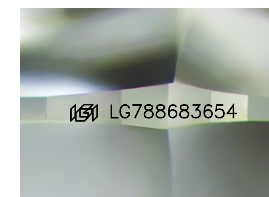
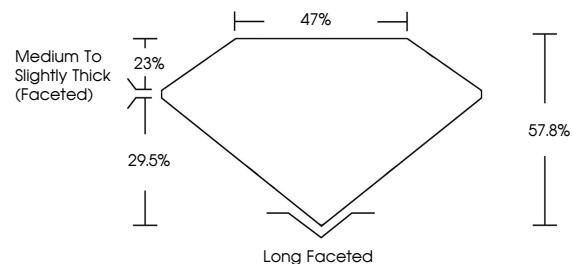
Carat Weight **1.18 CARAT**  
Color Grade **FANCY VIVID GREEN**  
Clarity Grade **VVS 2**

**ADDITIONAL GRADING INFORMATION**

Polish **EXCELLENT**  
Symmetry **VERY GOOD**  
Fluorescence **NONE**  
Inscription(s) **IGI LG788683654**

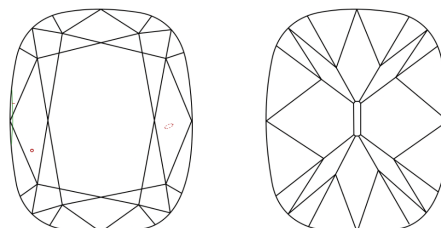
Comments: This Laboratory Grown Diamond was created by Chemical Vapor Deposition (CVD) growth process.  
Indications of post-growth treatment.

**PROPORTIONS**



Sample Image Used

**CLARITY CHARACTERISTICS**



**KEY TO SYMBOLS**

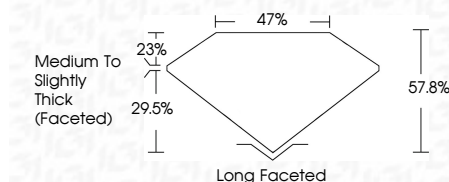
Red symbols indicate internal characteristics.  
Green symbols indicate external characteristics.

**COLOR**

D E F G H I J Faint Very Light Light

**CLARITY**

FL	IF	VVS <sup>1-2</sup>	VS <sup>1-2</sup>	SI <sup>1-2</sup>	I <sup>1-3</sup>
Flawless	Internally Flawless	Very Very Slightly Included	Very Slightly Included	Slightly Included	Included



**ADDITIONAL GRADING INFORMATION**

Polish **EXCELLENT**  
Symmetry **VERY GOOD**  
Fluorescence **NONE**  
Inscription(s) **IGI LG788683654**  
Comments: This Laboratory Grown Diamond was created by Chemical Vapor Deposition (CVD) growth process.  
Indications of post-growth treatment.



**IGI**



April 14, 2026  
IGI Report No LG788683654  
**CUSHION BRILLIANT**  
8.67 X 5.10 X 2.95 MM  
1.18 CARAT  
FANCY VIVID GREEN  
VVS 2  
57.8%  
47%  
Medium to Slightly Thick (Faceted)  
Long Faceted  
EXCELLENT  
VERY GOOD  
NONE  
IGI LG788683654  
Comments: This Laboratory Grown Diamond was created by Chemical Vapor Deposition (CVD) growth process.  
Indications of post-growth treatment.