



ELECTRONIC COPY

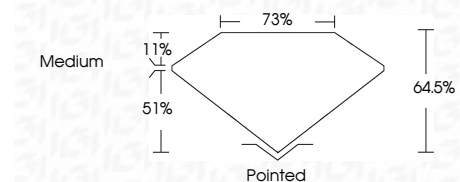
LG788683579
Report verification at igi.org



April 14, 2026
IGI Report Number **LG788683579**
Description **LABORATORY GROWN DIAMOND**
Shape and Cutting Style **OCTAGONAL MIXED CUT**
Measurements **6.72 X 6.39 X 4.12 MM**

GRADING RESULTS

Carat Weight **1.42 CARAT**
Color Grade **H**
Clarity Grade **VS 2**



ADDITIONAL GRADING INFORMATION

Polish **EXCELLENT**
Symmetry **EXCELLENT**
Fluorescence **NONE**
Inscription(s) **IGI LG788683579**
Comments: This Laboratory Grown Diamond was created by Chemical Vapor Deposition (CVD) growth process. Type IIa



April 14, 2026
IGI Report No LG788683579
OCTAGONAL MIXED CUT
6.72 X 6.39 X 4.12 MM
1.42 CARAT H
Color Grade VS 2
Depth 64.5%
Table 51%
Girdle 11%
Medium
Pointed
EXCELLENT
EXCELLENT
NONE
IGI LG788683579
Comments: This Laboratory Grown Diamond was created by Chemical Vapor Deposition (CVD) growth process. Type IIa

LABORATORY GROWN DIAMOND REPORT

April 14, 2026
IGI Report Number **LG788683579**
Description **LABORATORY GROWN DIAMOND**
Shape and Cutting Style **OCTAGONAL MIXED CUT**
Measurements **6.72 X 6.39 X 4.12 MM**

GRADING RESULTS

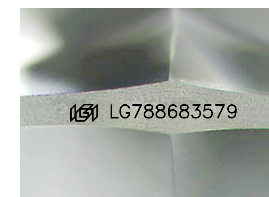
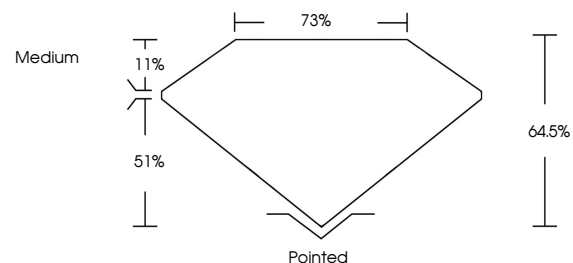
Carat Weight **1.42 CARAT**
Color Grade **H**
Clarity Grade **VS 2**

ADDITIONAL GRADING INFORMATION

Polish **EXCELLENT**
Symmetry **EXCELLENT**
Fluorescence **NONE**
Inscription(s) **IGI LG788683579**

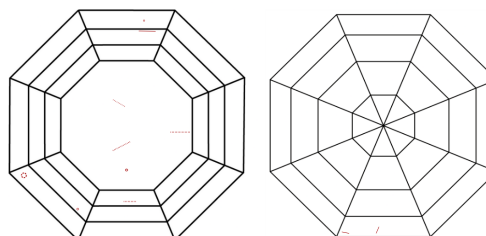
Comments: This Laboratory Grown Diamond was created by Chemical Vapor Deposition (CVD) growth process. Type IIa

PROPORTIONS



Sample Image Used

CLARITY CHARACTERISTICS



KEY TO SYMBOLS

Red symbols indicate internal characteristics.
Green symbols indicate external characteristics.

COLOR

D E F G H I J Faint Very Light Light

CLARITY

FL	IF	VS ¹⁻²	VS ¹⁻²	SI ¹⁻²	I ¹⁻³
Flawless	Internally Flawless	Very Very Slightly Included	Very Slightly Included	Slightly Included	Included

