



**ELECTRONIC COPY**

LG788683485  
Report verification at igi.org



April 21, 2026  
IGI Report Number **LG788683485**  
Description **LABORATORY GROWN DIAMOND**  
Shape and Cutting Style **ROUND ROSE CUT**  
Measurements **10.75 - 10.98 X 2.54 MM**  
**GRADING RESULTS**  
Carat Weight **2.77 CARATS**  
Color Grade **FANCY YELLOW**  
Clarity Grade **VVS 2**

April 21, 2026  
IGI Report Number **LG788683485**  
Description **LABORATORY GROWN DIAMOND**  
Shape and Cutting Style **ROUND ROSE CUT**  
Measurements **10.75 - 10.98 X 2.54 MM**

**GRADING RESULTS**

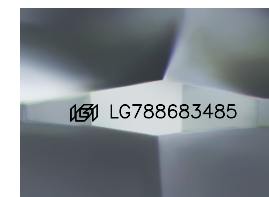
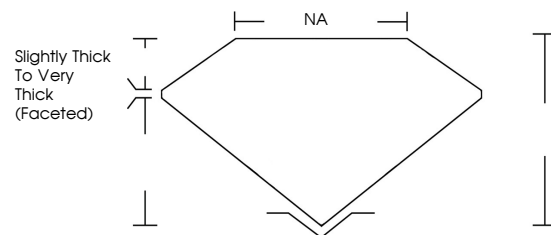
Carat Weight **2.77 CARATS**  
Color Grade **FANCY YELLOW**  
Clarity Grade **VVS 2**

**ADDITIONAL GRADING INFORMATION**

Polish **VERY GOOD**  
Symmetry **VERY GOOD**  
Fluorescence **NONE**  
Inscription(s) **IGI LG788683485**

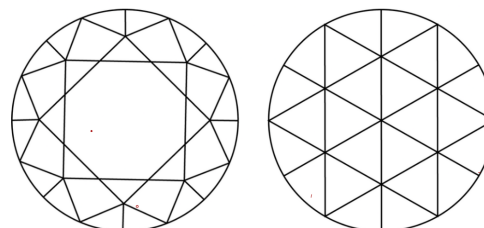
Comments: This Laboratory Grown Diamond was created by Chemical Vapor Deposition (CVD) growth process.

**PROPORTIONS**



Sample Image Used

**CLARITY CHARACTERISTICS**



**KEY TO SYMBOLS**

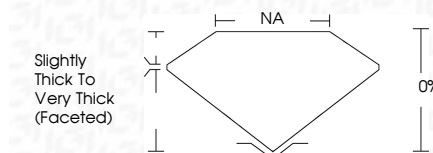
Red symbols indicate internal characteristics.  
Green symbols indicate external characteristics.

**COLOR**

D E F G H I J Faint Very Light Light

**CLARITY**

FL	IF	VVS <sup>1-2</sup>	VS <sup>1-2</sup>	SI <sup>1-2</sup>	I <sup>1-3</sup>
Flawless	Internally Flawless	Very Very Slightly Included	Very Slightly Included	Slightly Included	Included



**ADDITIONAL GRADING INFORMATION**

Polish **VERY GOOD**  
Symmetry **VERY GOOD**  
Fluorescence **NONE**  
Inscription(s) **IGI LG788683485**  
Comments: This Laboratory Grown Diamond was created by Chemical Vapor Deposition (CVD) growth process.



**IGI**



April 21, 2026  
IGI Report No LG788683485  
**ROUND ROSE CUT**  
2.77 CARATS  
FANCY YELLOW  
VVS 2  
10.75 - 10.98 X 2.54 MM  
Color Grade  
Clarity Grade  
Table  
Girdle  
Slightly Thick To Very Thick (Faceted)  
NA  
0%  
VERY GOOD  
VERY GOOD  
NONE  
IGI LG788683485  
Comments: This Laboratory Grown Diamond was created by Chemical Vapor Deposition (CVD) growth process.