



**ELECTRONIC COPY**

LG788683445  
Report verification at igi.org



April 11, 2026  
IGI Report Number **LG788683445**  
Description **LABORATORY GROWN DIAMOND**  
Shape and Cutting Style **CUSHION MODIFIED BRILLIANT**  
Measurements **11.50 X 8.45 X 5.94 MM**  
**GRADING RESULTS**  
Carat Weight **5.00 CARATS**  
Color Grade **FANCY VIVID BLUE**  
Clarity Grade **VS 2**

**LABORATORY GROWN DIAMOND REPORT**

April 11, 2026  
IGI Report Number **LG788683445**  
Description **LABORATORY GROWN DIAMOND**  
Shape and Cutting Style **CUSHION MODIFIED BRILLIANT**  
Measurements **11.50 X 8.45 X 5.94 MM**

**GRADING RESULTS**

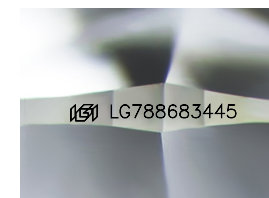
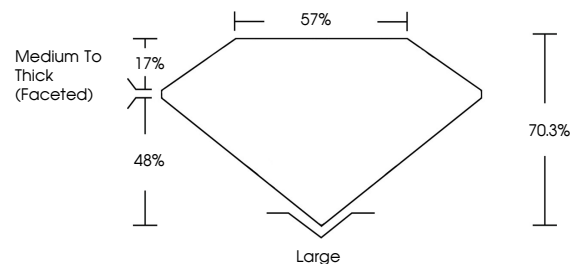
Carat Weight **5.00 CARATS**  
Color Grade **FANCY VIVID BLUE**  
Clarity Grade **VS 2**

**ADDITIONAL GRADING INFORMATION**

Polish **EXCELLENT**  
Symmetry **EXCELLENT**  
Fluorescence **NONE**  
Inscription(s) **LG788683445**

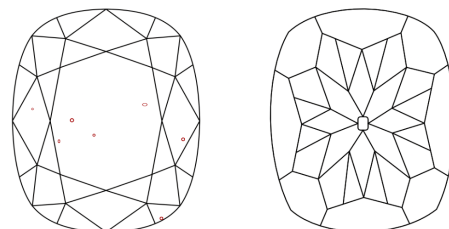
Comments: This Laboratory Grown Diamond was created by Chemical Vapor Deposition (CVD) growth process.  
Indications of post-growth treatment.

**PROPORTIONS**



Sample Image Used

**CLARITY CHARACTERISTICS**



**KEY TO SYMBOLS**

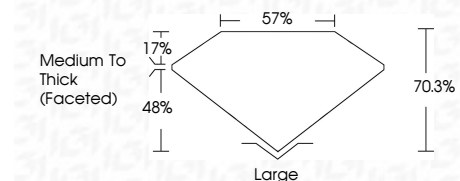
Red symbols indicate internal characteristics.  
Green symbols indicate external characteristics.

**COLOR**

D E F G H I J Faint Very Light Light

**CLARITY**

FL	IF	VS <sup>1-2</sup>	VS <sup>1-2</sup>	SI <sup>1-2</sup>	I <sup>1-3</sup>
Flawless	Internally Flawless	Very Very Slightly Included	Very Slightly Included	Slightly Included	Included



**ADDITIONAL GRADING INFORMATION**

Polish **EXCELLENT**  
Symmetry **EXCELLENT**  
Fluorescence **NONE**  
Inscription(s) **LG788683445**  
Comments: This Laboratory Grown Diamond was created by Chemical Vapor Deposition (CVD) growth process.  
Indications of post-growth treatment.



April 11, 2026  
IGI Report No **LG788683445**  
**CUSHION MODIFIED BRILLIANT**  
11.50 X 8.45 X 5.94 MM  
5.00 CARATS  
FANCY VIVID BLUE  
VS 2  
70.3%  
48%  
Medium To Thick (Faceted)  
Large  
EXCELLENT  
EXCELLENT  
NONE  
IGI LG788683445  
Comments: This Laboratory Grown Diamond was created by Chemical Vapor Deposition (CVD) growth process.  
Indications of post-growth treatment.