



**ELECTRONIC COPY**

LG788683378  
Report verification at igi.org



April 11, 2026  
IGI Report Number **LG788683378**  
Description **LABORATORY GROWN DIAMOND**  
Shape and Cutting Style **MODIFIED OCTAGON STEP CUT**  
Measurements **12.71 X 5.11 X 3.03 MM**  
**GRADING RESULTS**  
Carat Weight **1.34 CARAT**  
Color Grade **FANCY YELLOW**  
Clarity Grade **VVS 2**

April 11, 2026  
IGI Report Number **LG788683378**  
Description **LABORATORY GROWN DIAMOND**  
Shape and Cutting Style **MODIFIED OCTAGON STEP CUT**  
Measurements **12.71 X 5.11 X 3.03 MM**

**GRADING RESULTS**

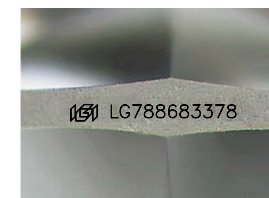
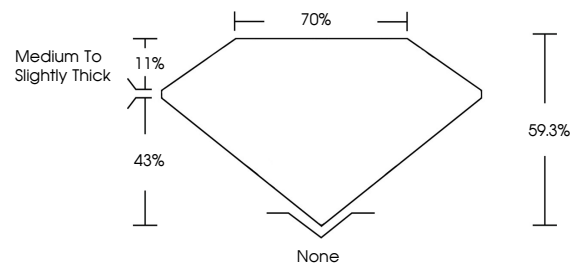
Carat Weight **1.34 CARAT**  
Color Grade **FANCY YELLOW**  
Clarity Grade **VVS 2**

**ADDITIONAL GRADING INFORMATION**

Polish **EXCELLENT**  
Symmetry **EXCELLENT**  
Fluorescence **NONE**  
Inscription(s) **IGI LG788683378**

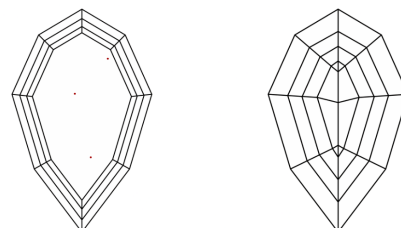
Comments: This Laboratory Grown Diamond was created by Chemical Vapor Deposition (CVD) growth process.

**PROPORTIONS**



Sample Image Used

**CLARITY CHARACTERISTICS**



**KEY TO SYMBOLS**

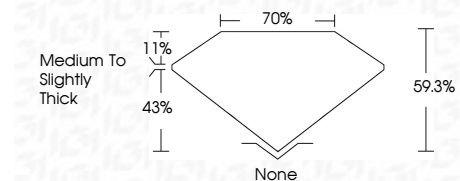
Red symbols indicate internal characteristics.  
Green symbols indicate external characteristics.

**COLOR**

D E F G H I J Faint Very Light Light

**CLARITY**

FL	IF	VVS <sup>1-2</sup>	VS <sup>1-2</sup>	SI <sup>1-2</sup>	I <sup>1-3</sup>
Flawless	Internally Flawless	Very Very Slightly Included	Very Slightly Included	Slightly Included	Included



**ADDITIONAL GRADING INFORMATION**

Polish **EXCELLENT**  
Symmetry **EXCELLENT**  
Fluorescence **NONE**  
Inscription(s) **IGI LG788683378**  
Comments: This Laboratory Grown Diamond was created by Chemical Vapor Deposition (CVD) growth process.



**IGI**



April 11, 2026  
IGI Report No LG788683378  
MODIFIED OCTAGON STEP CUT  
12.71 X 5.11 X 3.03 MM  
1.34 CARAT  
FANCY YELLOW  
VVS 2  
59.3%  
70%  
Medium to Slightly Thick  
None  
None  
EXCELLENT  
EXCELLENT  
NONE  
IGI LG788683378  
Comments: This Laboratory Grown Diamond was created by Chemical Vapor Deposition (CVD) growth process.