



**ELECTRONIC COPY**

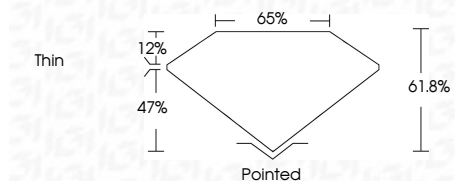
LG788683299  
Report verification at igi.org



April 11, 2026  
IGI Report Number **LG788683299**  
Description **LABORATORY GROWN DIAMOND**  
Shape and Cutting Style **OCTAGONAL STEP CUT**  
Measurements **6.35 X 6.20 X 3.83 MM**

**GRADING RESULTS**

Carat Weight **1.20 CARAT**  
Color Grade **G**  
Clarity Grade **VS 1**

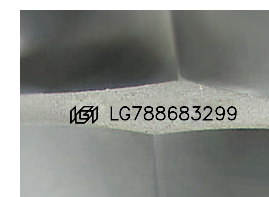


**ADDITIONAL GRADING INFORMATION**

Polish **EXCELLENT**  
Symmetry **EXCELLENT**  
Fluorescence **NONE**  
Inscription(s) **(IGI) LG788683299**  
Comments: This Laboratory Grown Diamond was created by Chemical Vapor Deposition (CVD) growth process. Type IIa

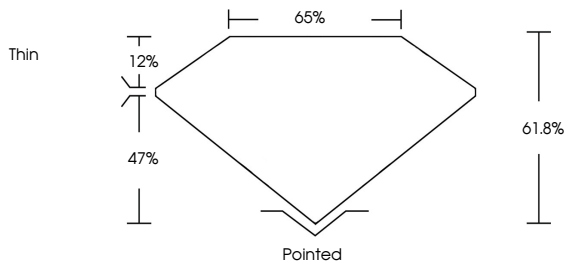


April 11, 2026  
IGI Report No LG788683299  
OCTAGONAL STEP CUT  
6.35 X 6.20 X 3.83 MM  
1.20 CARAT  
Color Grade G  
Clarity Grade VS 1  
Depth 61.8%  
Table 65%  
Girdle Thin  
Culet Pointed  
Polish EXCELLENT  
Symmetry EXCELLENT  
Fluorescence NONE  
Inscription(s) (IGI) LG788683299  
Comments: This Laboratory Grown Diamond was created by Chemical Vapor Deposition (CVD) growth process. Type IIa

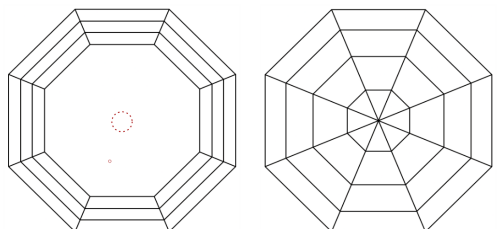


Sample Image Used

**PROPORTIONS**



**CLARITY CHARACTERISTICS**



**KEY TO SYMBOLS**

Red symbols indicate internal characteristics.  
Green symbols indicate external characteristics.

**COLOR**

D	E	F	G	H	I	J	Faint	Very Light	Light
---	---	---	---	---	---	---	-------	------------	-------

**CLARITY**

FL	IF	VS <sup>1-2</sup>	VS <sup>1-2</sup>	SI <sup>1-2</sup>	I <sup>1-3</sup>
Flawless	Internally Flawless	Very Very Slightly Included	Very Slightly Included	Slightly Included	Included

