



**ELECTRONIC COPY**

LG788678010  
Report verification at igi.org



April 3, 2026

IGI Report Number **LG788678010**

Description **LABORATORY GROWN DIAMOND**

Shape and Cutting Style **CUT CORNERED  
RECTANGULAR MODIFIED  
BRILLIANT**

Measurements **7.03 X 4.87 X 3.33 MM**

**GRADING RESULTS**

Carat Weight **0.97 CARAT**

Color Grade **D**

Clarity Grade **VVS 2**

**LABORATORY GROWN DIAMOND REPORT**

April 3, 2026

IGI Report Number **LG788678010**

Description **LABORATORY GROWN DIAMOND**

Shape and Cutting Style **CUT CORNERED RECTANGULAR  
MODIFIED BRILLIANT**

Measurements **7.03 X 4.87 X 3.33 MM**

**GRADING RESULTS**

Carat Weight **0.97 CARAT**

Color Grade **D**

Clarity Grade **VVS 2**

**ADDITIONAL GRADING INFORMATION**

Polish **EXCELLENT**

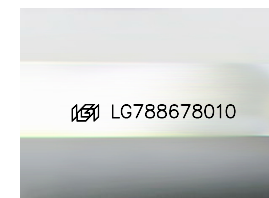
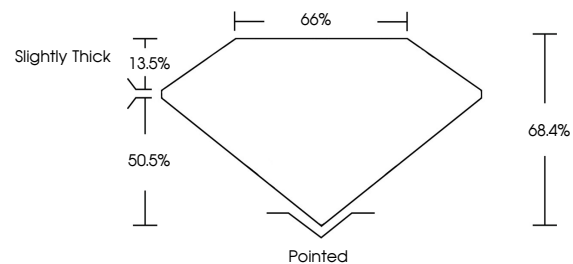
Symmetry **EXCELLENT**

Fluorescence **NONE**

Inscription(s) **IGI LG788678010**

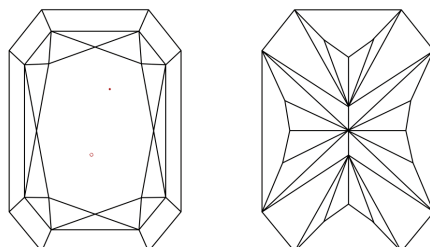
Comments: This Laboratory Grown Diamond was created by Chemical Vapor Deposition (CVD) growth process. Type IIa

**PROPORTIONS**



Sample Image Used

**CLARITY CHARACTERISTICS**



**KEY TO SYMBOLS**

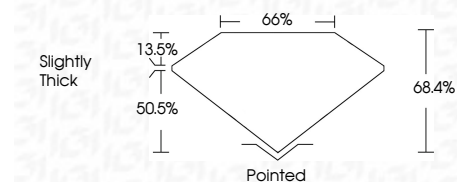
Red symbols indicate internal characteristics.  
Green symbols indicate external characteristics.

**COLOR**

D E F G H I J Faint Very Light Light

**CLARITY**

FL	IF	VVS <sup>1-2</sup>	VS <sup>1-2</sup>	SI <sup>1-2</sup>	I <sup>1-3</sup>
Flawless	Internally Flawless	Very Very Slightly Included	Very Slightly Included	Slightly Included	Included



**ADDITIONAL GRADING INFORMATION**

Polish **EXCELLENT**

Symmetry **EXCELLENT**

Fluorescence **NONE**

Inscription(s) **IGI LG788678010**

Comments: This Laboratory Grown Diamond was created by Chemical Vapor Deposition (CVD) growth process. Type IIa



**IGI**



April 3, 2026  
IGI Report No LG788678010  
CUT CORNERED RECT. MODIFIED BRILLIANT  
7.03 X 4.87 X 3.33 MM  
Carat Weight 0.97 CARAT  
Color Grade D  
Clarity Grade VVS 2  
Table 13.5%  
Depth 50.5%  
Girdle Slightly Thick  
Culet Pointed  
Polish EXCELLENT  
Symmetry EXCELLENT  
Fluorescence NONE  
Inscription(s) IGI LG788678010

Comments: This Laboratory Grown Diamond was created by Chemical Vapor Deposition (CVD) growth process. Type IIa