



**ELECTRONIC COPY**

LG788675931  
Report verification at igi.org



April 2, 2026

IGI Report Number **LG788675931**

Description **LABORATORY GROWN DIAMOND**

Shape and Cutting Style **CUT CORNERED  
RECTANGULAR MODIFIED  
BRILLIANT**

Measurements **8.79 X 6.02 X 3.96 MM**

**GRADING RESULTS**

Carat Weight **1.84 CARAT**

Color Grade **D**

Clarity Grade **VS 1**

**LABORATORY GROWN DIAMOND REPORT**

April 2, 2026

IGI Report Number **LG788675931**

Description **LABORATORY GROWN DIAMOND**

Shape and Cutting Style **CUT CORNERED RECTANGULAR  
MODIFIED BRILLIANT**

Measurements **8.79 X 6.02 X 3.96 MM**

**GRADING RESULTS**

Carat Weight **1.84 CARAT**

Color Grade **D**

Clarity Grade **VS 1**

**ADDITIONAL GRADING INFORMATION**

Polish **EXCELLENT**

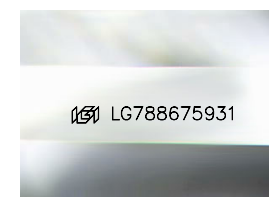
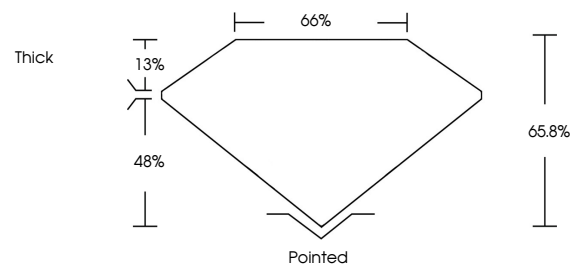
Symmetry **EXCELLENT**

Fluorescence **NONE**

Inscription(s) **IGI LG788675931**

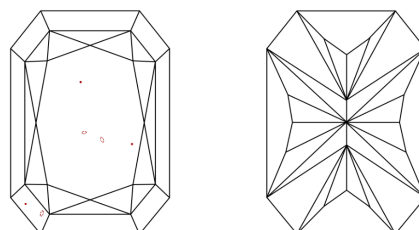
Comments: This Laboratory Grown Diamond was created by Chemical Vapor Deposition (CVD) growth process.  
Type IIa

**PROPORTIONS**



Sample Image Used

**CLARITY CHARACTERISTICS**



**KEY TO SYMBOLS**

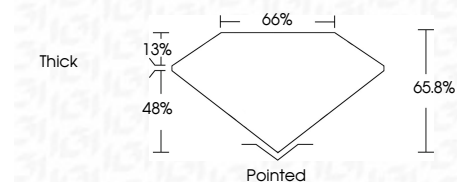
Red symbols indicate internal characteristics.  
Green symbols indicate external characteristics.

**COLOR**

D E F G H I J Faint Very Light Light

**CLARITY**

FL	IF	VS <sup>1-2</sup>	VS <sup>1-2</sup>	SI <sup>1-2</sup>	I <sup>1-3</sup>
Flawless	Internally Flawless	Very Very Slightly Included	Very Slightly Included	Slightly Included	Included



**ADDITIONAL GRADING INFORMATION**

Polish **EXCELLENT**

Symmetry **EXCELLENT**

Fluorescence **NONE**

Inscription(s) **IGI LG788675931**

Comments: This Laboratory Grown Diamond was created by Chemical Vapor Deposition (CVD) growth process.  
Type IIa



April 2, 2026  
IGI Report No LG788675931  
CUT CORNERED RECT. MODIFIED BRILLIANT  
1.84 CARAT  
D  
VS 1  
65.8%  
65% Thick  
Pointed  
EXCELLENT  
EXCELLENT  
NONE  
IGI LG788675931  
Comments: This Laboratory Grown Diamond was created by Chemical Vapor Deposition (CVD) growth process.  
Type IIa