



**ELECTRONIC COPY**

LG788675901  
Report verification at igi.org



April 7, 2026

IGI Report Number **LG788675901**

Description **LABORATORY GROWN DIAMOND**

Shape and Cutting Style **ROUND BRILLIANT**

Measurements **7.30 - 7.36 X 4.77 MM**

**GRADING RESULTS**

Carat Weight **1.63 CARAT**

Color Grade **FANCY BROWN**

Clarity Grade **SI 2**

Cut Grade **VERY GOOD**

April 7, 2026

IGI Report Number **LG788675901**

Description **LABORATORY GROWN DIAMOND**

Shape and Cutting Style **ROUND BRILLIANT**

Measurements **7.30 - 7.36 X 4.77 MM**

**GRADING RESULTS**

Carat Weight **1.63 CARAT**

Color Grade **FANCY BROWN**

Clarity Grade **SI 2**

Cut Grade **VERY GOOD**

**ADDITIONAL GRADING INFORMATION**

Polish **VERY GOOD**

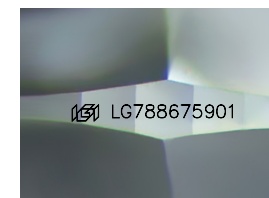
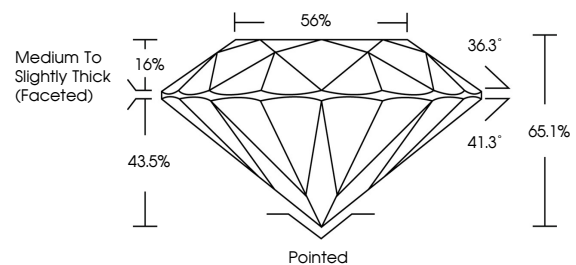
Symmetry **VERY GOOD**

Fluorescence **NONE**

Inscription(s) **IGI LG788675901**

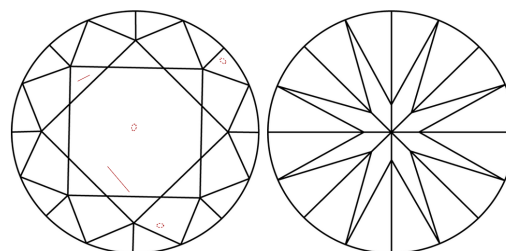
Comments: This Laboratory Grown Diamond was created by Chemical Vapor Deposition (CVD) growth process.

**PROPORTIONS**



Sample Image Used

**CLARITY CHARACTERISTICS**



**KEY TO SYMBOLS**

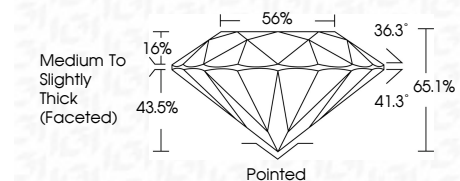
Red symbols indicate internal characteristics.  
Green symbols indicate external characteristics.

**COLOR**

D E F G H I J Faint Very Light Light

**CLARITY**

FL	IF	VS <sup>1-2</sup>	VS <sup>1-2</sup>	SI <sup>1-2</sup>	I <sup>1-3</sup>
Flawless	Internally Flawless	Very Very Slightly Included	Very Slightly Included	Slightly Included	Included



**ADDITIONAL GRADING INFORMATION**

Polish **VERY GOOD**

Symmetry **VERY GOOD**

Fluorescence **NONE**

Inscription(s) **IGI LG788675901**

Comments: This Laboratory Grown Diamond was created by Chemical Vapor Deposition (CVD) growth process.



April 7, 2026	IGI Report No LG788675901	1.63 CARAT	Pointed
ROUND BRILLIANT	7.30 - 7.36 X 4.77 MM	FANCY BROWN	VERY GOOD
		SI 2	VERY GOOD
		VERY GOOD	66.1%
		56%	Medium To Slightly Thick (Faceted)
			Pointed
			VERY GOOD
			VERY GOOD
			NONE
			IGI LG788675901

Comments: This Laboratory Grown Diamond was created by Chemical Vapor Deposition (CVD) growth process.