



ELECTRONIC COPY

LG788675893
Report verification at igi.org



April 7, 2026
IGI Report Number **LG788675893**
Description **LABORATORY GROWN DIAMOND**
Shape and Cutting Style **ROUND BRILLIANT**
Measurements **6.55 - 6.56 X 4.14 MM**
GRADING RESULTS
Carat Weight **1.12 CARAT**
Color Grade **FANCY DEEP BROWN**
Clarity Grade **SI 2**
Cut Grade **EXCELLENT**

April 7, 2026
IGI Report Number **LG788675893**
Description **LABORATORY GROWN DIAMOND**
Shape and Cutting Style **ROUND BRILLIANT**
Measurements **6.55 - 6.56 X 4.14 MM**

GRADING RESULTS

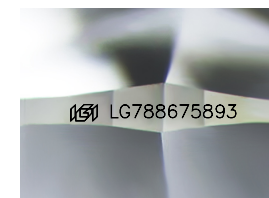
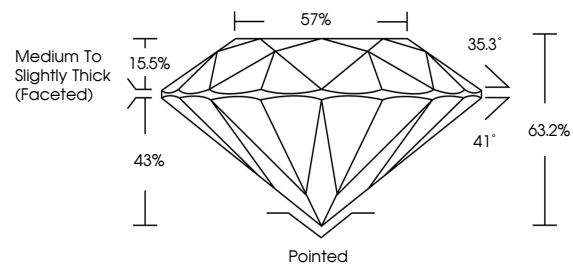
Carat Weight **1.12 CARAT**
Color Grade **FANCY DEEP BROWN**
Clarity Grade **SI 2**
Cut Grade **EXCELLENT**

ADDITIONAL GRADING INFORMATION

Polish **VERY GOOD**
Symmetry **VERY GOOD**
Fluorescence **NONE**
Inscription(s) **IGI LG788675893**

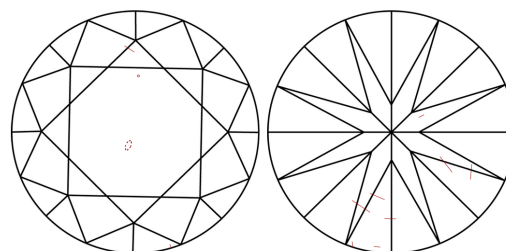
Comments: This Laboratory Grown Diamond was created by Chemical Vapor Deposition (CVD) growth process.

PROPORTIONS



Sample Image Used

CLARITY CHARACTERISTICS



KEY TO SYMBOLS

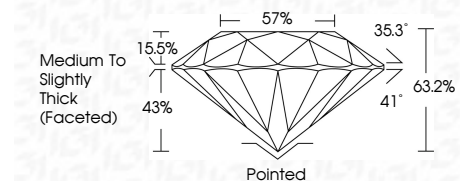
Red symbols indicate internal characteristics.
Green symbols indicate external characteristics.

COLOR

D E F G H I J Faint Very Light Light

CLARITY

FL	IF	VS ¹⁻²	VS ¹⁻²	SI ¹⁻²	I ¹⁻³
Flawless	Internally Flawless	Very Very Slightly Included	Very Slightly Included	Slightly Included	Included



ADDITIONAL GRADING INFORMATION

Polish **VERY GOOD**
Symmetry **VERY GOOD**
Fluorescence **NONE**
Inscription(s) **IGI LG788675893**
Comments: This Laboratory Grown Diamond was created by Chemical Vapor Deposition (CVD) growth process.



April 7, 2026
IGI Report No LG788675893
ROUND BRILLIANT
6.55 - 6.56 X 4.14 MM
Carat Weight **1.12 CARAT**
Color Grade **FANCY DEEP BROWN**
Clarity Grade **SI 2**
Cut Grade **EXCELLENT**
Depth **63.2%**
Table **57%**
Girdle **Medium To Slightly Thick (Faceted)**
Culet **Pointed**
Polish **VERY GOOD**
Symmetry **VERY GOOD**
Fluorescence **NONE**
Inscription(s) **IGI LG788675893**
Comments: This Laboratory Grown Diamond was created by Chemical Vapor Deposition (CVD) growth process.