



**ELECTRONIC COPY**

LG788675891  
Report verification at igi.org



April 7, 2026  
IGI Report Number **LG788675891**  
Description **LABORATORY GROWN DIAMOND**  
Shape and Cutting Style **ROUND BRILLIANT**  
Measurements **8.59 - 8.64 X 5.66 MM**  
**GRADING RESULTS**  
Carat Weight **2.68 CARATS**  
Color Grade **FANCY DEEP BROWN**  
Clarity Grade **VS 1**  
Cut Grade **GOOD**

April 7, 2026  
IGI Report Number **LG788675891**  
Description **LABORATORY GROWN DIAMOND**  
Shape and Cutting Style **ROUND BRILLIANT**  
Measurements **8.59 - 8.64 X 5.66 MM**

**GRADING RESULTS**

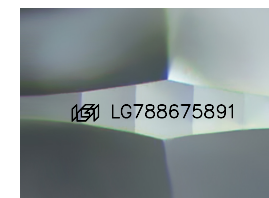
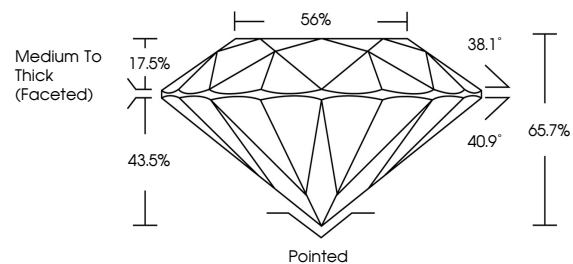
Carat Weight **2.68 CARATS**  
Color Grade **FANCY DEEP BROWN**  
Clarity Grade **VS 1**  
Cut Grade **GOOD**

**ADDITIONAL GRADING INFORMATION**

Polish **VERY GOOD**  
Symmetry **GOOD**  
Fluorescence **NONE**  
Inscription(s) **IGI LG788675891**

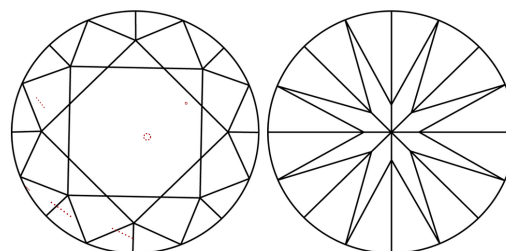
Comments: This Laboratory Grown Diamond was created by Chemical Vapor Deposition (CVD) growth process.

**PROPORTIONS**



Sample Image Used

**CLARITY CHARACTERISTICS**



**KEY TO SYMBOLS**

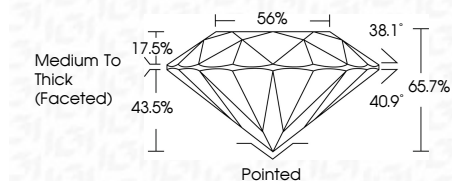
Red symbols indicate internal characteristics.  
Green symbols indicate external characteristics.

**COLOR**

D E F G H I J Faint Very Light Light

**CLARITY**

FL	IF	VS <sup>1-2</sup>	VS <sup>1-2</sup>	SI <sup>1-2</sup>	I <sup>1-3</sup>
Flawless	Internally Flawless	Very Very Slightly Included	Very Slightly Included	Slightly Included	Included



**ADDITIONAL GRADING INFORMATION**

Polish **VERY GOOD**  
Symmetry **GOOD**  
Fluorescence **NONE**  
Inscription(s) **IGI LG788675891**  
Comments: This Laboratory Grown Diamond was created by Chemical Vapor Deposition (CVD) growth process.



**IGI**



April 7, 2026  
IGI Report No LG788675891  
**ROUND BRILLIANT**  
8.59 - 8.64 X 5.66 MM  
2.68 CARATS  
FANCY DEEP BROWN  
VS 1  
GOOD  
66.7%  
56%  
Medium To Thick (Faceted)  
Pointed  
VERY GOOD  
GOOD  
NONE  
NONE  
IGI LG788675891  
Comments: This Laboratory Grown Diamond was created by Chemical Vapor Deposition (CVD) growth process.