



ELECTRONIC COPY

LG788674336
Report verification at igi.org



April 8, 2026
IGI Report Number **LG788674336**
Description **LABORATORY GROWN DIAMOND**
Shape and Cutting Style **HEXAGONAL MIXED CUT**
Measurements **12.62 X 4.47 X 2.87 MM**

GRADING RESULTS

Carat Weight **1.04 CARAT**
Color Grade **LIGHT YELLOW**
Clarity Grade **VS 1**

April 8, 2026
IGI Report Number **LG788674336**
Description **LABORATORY GROWN DIAMOND**
Shape and Cutting Style **HEXAGONAL MIXED CUT**
Measurements **12.62 X 4.47 X 2.87 MM**

GRADING RESULTS

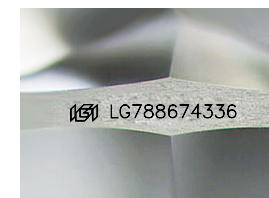
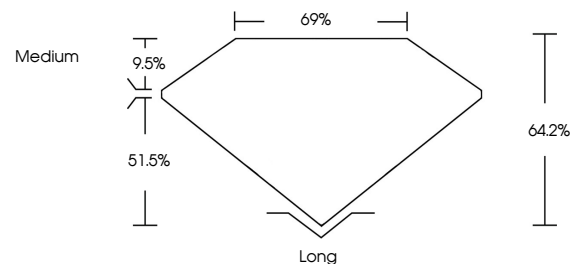
Carat Weight **1.04 CARAT**
Color Grade **LIGHT YELLOW**
Clarity Grade **VS 1**

ADDITIONAL GRADING INFORMATION

Polish **VERY GOOD**
Symmetry **VERY GOOD**
Fluorescence **NONE**
Inscription(s) **LG788674336**

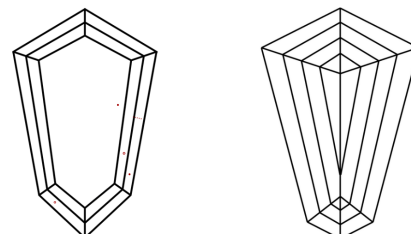
Comments: This Laboratory Grown Diamond was created by Chemical Vapor Deposition (CVD) growth process.

PROPORTIONS



Sample Image Used

CLARITY CHARACTERISTICS



KEY TO SYMBOLS

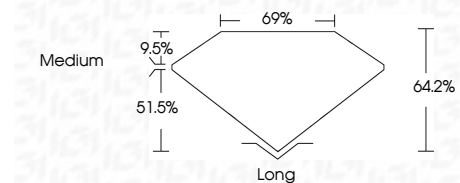
Red symbols indicate internal characteristics.
Green symbols indicate external characteristics.

COLOR

D E F G H I J Faint Very Light Light

CLARITY

| FL | IF | VS ¹⁻² | VS ¹⁻² | SI ¹⁻² | I ¹⁻³ |
|----------|---------------------|-----------------------------|------------------------|-------------------|------------------|
| Flawless | Internally Flawless | Very Very Slightly Included | Very Slightly Included | Slightly Included | Included |



ADDITIONAL GRADING INFORMATION

Polish **VERY GOOD**
Symmetry **VERY GOOD**
Fluorescence **NONE**
Inscription(s) **LG788674336**
Comments: This Laboratory Grown Diamond was created by Chemical Vapor Deposition (CVD) growth process.



IGI



April 8, 2026
IGI Report No **LG788674336**
HEXAGONAL MIXED CUT
1.04 CARAT
LIGHT YELLOW
Color Grade
VS 1
64.2%
69%
Medium
Long
VERY GOOD
VERY GOOD
NONE
Inscription(s)
 LG788674336
Comments: This Laboratory Grown Diamond was created by Chemical Vapor Deposition (CVD) growth process.