



ELECTRONIC COPY

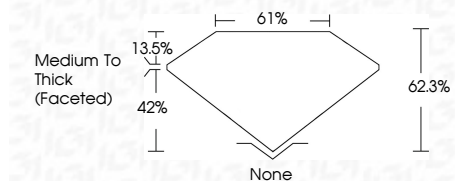
LG788674031
Report verification at igi.org



April 10, 2026
IGI Report Number **LG788674031**
Description **LABORATORY GROWN DIAMOND**
Shape and Cutting Style **PEAR MODIFIED BRILLIANT**
Measurements **8.12 X 5.22 X 3.25 MM**

GRADING RESULTS

Carat Weight **1.01 CARAT**
Color Grade **FANCY YELLOW**
Clarity Grade **VS 1**



ADDITIONAL GRADING INFORMATION

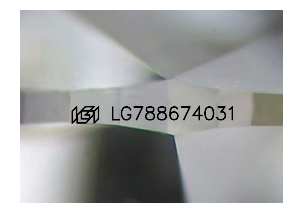
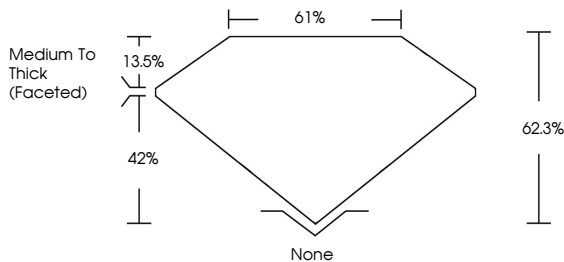
Polish **EXCELLENT**
Symmetry **VERY GOOD**
Fluorescence **NONE**
Inscription(s) **IGI LG788674031**
Comments: This Laboratory Grown Diamond was created by Chemical Vapor Deposition (CVD) growth process.



April 10, 2026
IGI Report No **LG788674031**
PEAR MODIFIED BRILLIANT
8.12 X 5.22 X 3.25 MM
Carat Weight **1.01 CARAT**
Color Grade **FANCY YELLOW**
Clarity Grade **VS 1**
Depth **62.3%**
Table **61%**
Girdle **Medium To Thick (Faceted)**
Culet **None**
Polish **EXCELLENT**
Symmetry **VERY GOOD**
Fluorescence **NONE**
Inscription(s) **IGI LG788674031**
Comments: This Laboratory Grown Diamond was created by Chemical Vapor Deposition (CVD) growth process.

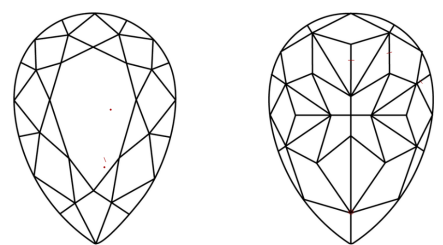
April 10, 2026
IGI Report Number **LG788674031**
Description **LABORATORY GROWN DIAMOND**
Shape and Cutting Style **PEAR MODIFIED BRILLIANT**
Measurements **8.12 X 5.22 X 3.25 MM**
GRADING RESULTS
Carat Weight **1.01 CARAT**
Color Grade **FANCY YELLOW**
Clarity Grade **VS 1**
ADDITIONAL GRADING INFORMATION
Polish **EXCELLENT**
Symmetry **VERY GOOD**
Fluorescence **NONE**
Inscription(s) **IGI LG788674031**
Comments: This Laboratory Grown Diamond was created by Chemical Vapor Deposition (CVD) growth process.

PROPORTIONS



Sample Image Used

CLARITY CHARACTERISTICS



KEY TO SYMBOLS

Red symbols indicate internal characteristics.
Green symbols indicate external characteristics.

COLOR

D	E	F	G	H	I	J	Faint	Very Light	Light
---	---	---	---	---	---	---	-------	------------	-------

CLARITY

FL	IF	VS ¹⁻²	VS ¹⁻²	SI ¹⁻²	I ¹⁻³
Flawless	Internally Flawless	Very Very Slightly Included	Very Slightly Included	Slightly Included	Included

