



**ELECTRONIC COPY**

LG788669401  
Report verification at igi.org



June 16, 2026  
IGI Report Number **LG788669401**  
Description **LABORATORY GROWN DIAMOND**  
Shape and Cutting Style **HEXAGONAL MODIFIED BRILLIANT**  
Measurements **11.92 X 6.40 X 4.30 MM**  
**GRADING RESULTS**  
Carat Weight **2.05 CARATS**  
Color Grade **E**  
Clarity Grade **VVS 2**

June 16, 2026  
IGI Report Number **LG788669401**  
Description **LABORATORY GROWN DIAMOND**  
Shape and Cutting Style **HEXAGONAL MODIFIED BRILLIANT**  
Measurements **11.92 X 6.40 X 4.30 MM**

**GRADING RESULTS**

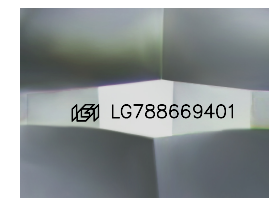
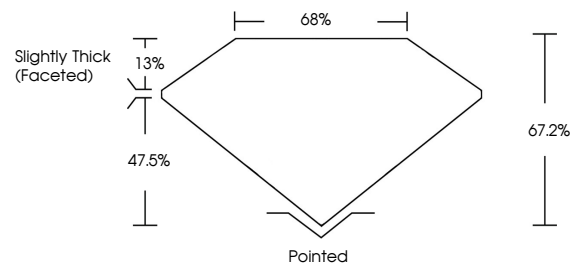
Carat Weight **2.05 CARATS**  
Color Grade **E**  
Clarity Grade **VVS 2**

**ADDITIONAL GRADING INFORMATION**

Polish **EXCELLENT**  
Symmetry **EXCELLENT**  
Fluorescence **NONE**  
Inscription(s) **IGI LG788669401**

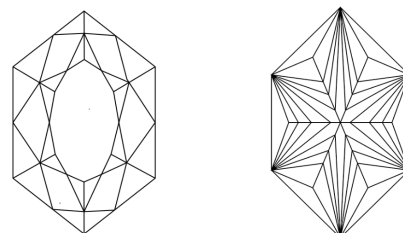
Comments: This Laboratory Grown Diamond was created by Chemical Vapor Deposition (CVD) growth process.  
Type IIa

**PROPORTIONS**



Sample Image Used

**CLARITY CHARACTERISTICS**



**KEY TO SYMBOLS**

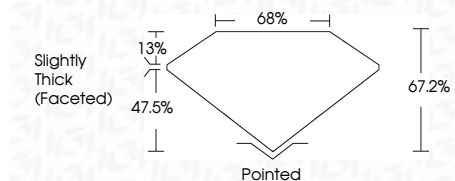
Red symbols indicate internal characteristics.  
Green symbols indicate external characteristics.

**COLOR**

D E F G H I J Faint Very Light Light

**CLARITY**

FL	IF	VVS <sup>1-2</sup>	VS <sup>1-2</sup>	SI <sup>1-2</sup>	I <sup>1-3</sup>
Flawless	Internally Flawless	Very Very Slightly Included	Very Slightly Included	Slightly Included	Included



**ADDITIONAL GRADING INFORMATION**

Polish **EXCELLENT**  
Symmetry **EXCELLENT**  
Fluorescence **NONE**  
Inscription(s) **IGI LG788669401**  
Comments: This Laboratory Grown Diamond was created by Chemical Vapor Deposition (CVD) growth process.  
Type IIa



June 16, 2026  
IGI Report No **LG788669401**  
**HEXAGONAL MODIFIED BRILLIANT**  
**2.05 CARATS**  
**E**  
**VVS 2**  
**67.2%**  
**68%**  
**Slightly Thick (Faceted)**  
**Pointed**  
**EXCELLENT**  
**EXCELLENT**  
**NONE**  
**IGI LG788669401**  
Comments: This Laboratory Grown Diamond was created by Chemical Vapor Deposition (CVD) growth process.  
Type IIa