



ELECTRONIC COPY

LG788669073
Report verification at igi.org



April 2, 2026
IGI Report Number **LG788669073**
Description **LABORATORY GROWN DIAMOND**
Shape and Cutting Style **MODIFIED OCTAGON STEP CUT**
Measurements **10.77 X 6.51 X 4.52 MM**
GRADING RESULTS
Carat Weight **3.05 CARATS**
Color Grade **E**
Clarity Grade **VVS 2**

April 2, 2026
IGI Report Number **LG788669073**
Description **LABORATORY GROWN DIAMOND**
Shape and Cutting Style **MODIFIED OCTAGON STEP CUT**
Measurements **10.77 X 6.51 X 4.52 MM**

GRADING RESULTS

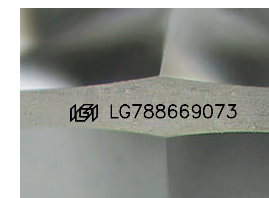
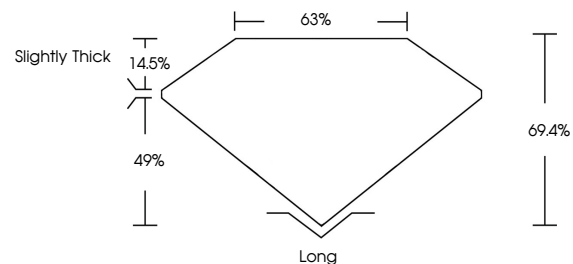
Carat Weight **3.05 CARATS**
Color Grade **E**
Clarity Grade **VVS 2**

ADDITIONAL GRADING INFORMATION

Polish **EXCELLENT**
Symmetry **EXCELLENT**
Fluorescence **NONE**
Inscription(s) **IGI LG788669073**

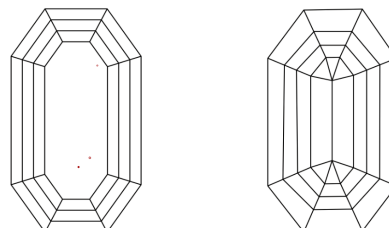
Comments: This Laboratory Grown Diamond was created by Chemical Vapor Deposition (CVD) growth process.
Type IIa

PROPORTIONS



Sample Image Used

CLARITY CHARACTERISTICS



KEY TO SYMBOLS

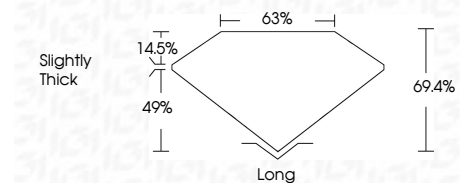
Red symbols indicate internal characteristics.
Green symbols indicate external characteristics.

COLOR

D E F G H I J Faint Very Light Light

CLARITY

FL	IF	VVS ¹⁻²	VS ¹⁻²	SI ¹⁻²	I ¹⁻³
Flawless	Internally Flawless	Very Very Slightly Included	Very Slightly Included	Slightly Included	Included



ADDITIONAL GRADING INFORMATION

Polish **EXCELLENT**
Symmetry **EXCELLENT**
Fluorescence **NONE**
Inscription(s) **IGI LG788669073**
Comments: This Laboratory Grown Diamond was created by Chemical Vapor Deposition (CVD) growth process.
Type IIa



IGI



April 2, 2026
IGI Report No LG788669073
MODIFIED OCTAGON STEP CUT
10.77 X 6.51 X 4.52 MM
3.05 CARATS
E
VVS 2
69.4%
63%
Slightly Thick
Long
EXCELLENT
EXCELLENT
NONE
IGI LG788669073
Comments: This Laboratory Grown Diamond was created by Chemical Vapor Deposition (CVD) growth process.
Type IIa