



ELECTRONIC COPY

LG788660879
Report verification at igi.org



April 6, 2026

IGI Report Number **LG788660879**

Description **LABORATORY GROWN DIAMOND**

Shape and Cutting Style **ROUND BRILLIANT**

Measurements **7.24 - 7.27 X 4.55 MM**

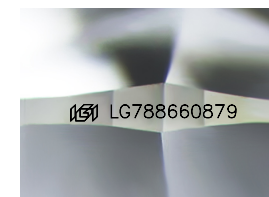
GRADING RESULTS

Carat Weight **1.49 CARAT**

Color Grade **E**

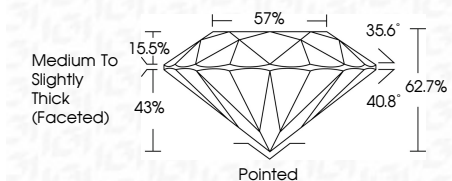
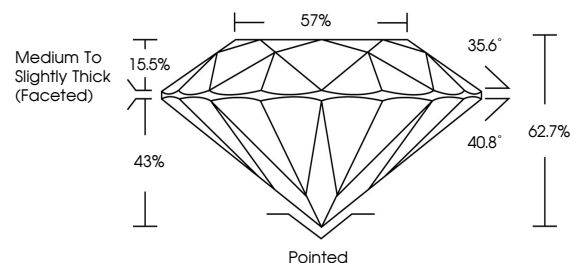
Clarity Grade **VS 1**

Cut Grade **EXCELLENT**

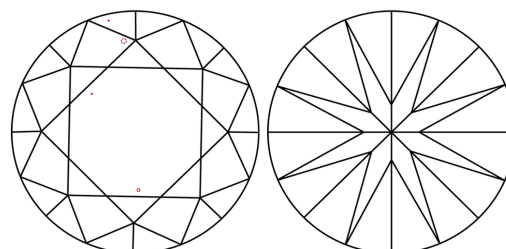


Sample Image Used

PROPORTIONS



CLARITY CHARACTERISTICS



KEY TO SYMBOLS

Red symbols indicate internal characteristics.
Green symbols indicate external characteristics.

COLOR

D E F G H I J Faint Very Light Light

CLARITY

| FL | IF | VS ¹⁻² | VS ¹⁻² | SI ¹⁻² | I ¹⁻³ |
|----------|---------------------|-----------------------------|------------------------|-------------------|------------------|
| Flawless | Internally Flawless | Very Very Slightly Included | Very Slightly Included | Slightly Included | Included |

ADDITIONAL GRADING INFORMATION

Polish **EXCELLENT**

Symmetry **EXCELLENT**

Fluorescence **NONE**

Inscription(s) **IGI LG788660879**

Comments: This Laboratory Grown Diamond was created by Chemical Vapor Deposition (CVD) growth process. Type IIa



| | | | | | | | | | | | | | | | | | | | |
|-----------------|---------------------------|-------------|-----------|-----------|-----------|-------|------------------------------------|---------|-----------|-----------|------------------------------------|-----------------|-----------|----------|-----------|--------------|------|----------------|-----------------|
| April 6, 2026 | IGI Report No LG788660879 | 1.49 CARAT | E | VS 1 | 62.7% | 57% | Medium To Slightly Thick (Faceted) | Pointed | EXCELLENT | EXCELLENT | NONE | IGI LG788660879 | | | | | | | |
| ROUND BRILLIANT | 7.24 - 7.27 X 4.55 MM | Color Grade | EXCELLENT | Cut Grade | EXCELLENT | Depth | 62.7% | Table | 57% | Grade | Medium To Slightly Thick (Faceted) | Pointed | EXCELLENT | Symmetry | EXCELLENT | Fluorescence | NONE | Inscription(s) | IGI LG788660879 |

Comments: This Laboratory Grown Diamond was created by Chemical Vapor Deposition (CVD) growth process. Type IIa