



**ELECTRONIC COPY**

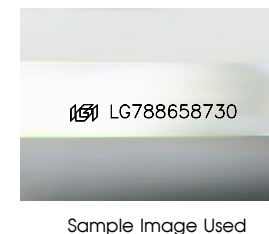
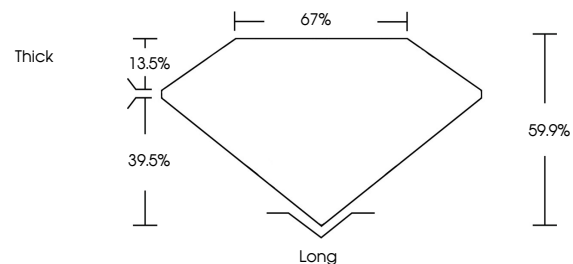
LG788658730  
Report verification at igi.org



April 7, 2026  
IGI Report Number **LG788658730**  
Description **LABORATORY GROWN DIAMOND**  
Shape and Cutting Style **EMERALD CUT**  
Measurements **7.23 X 4.81 X 2.88 MM**  
**GRADING RESULTS**  
Carat Weight **1.07 CARAT**  
Color Grade **FANCY LIGHT YELLOW**  
Clarity Grade **VS 1**

April 7, 2026  
IGI Report Number **LG788658730**  
Description **LABORATORY GROWN DIAMOND**  
Shape and Cutting Style **EMERALD CUT**  
Measurements **7.23 X 4.81 X 2.88 MM**

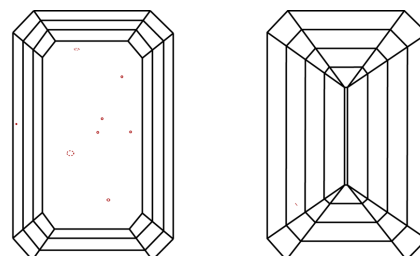
**PROPORTIONS**



**GRADING RESULTS**

Carat Weight **1.07 CARAT**  
Color Grade **FANCY LIGHT YELLOW**  
Clarity Grade **VS 1**

**CLARITY CHARACTERISTICS**



**KEY TO SYMBOLS**

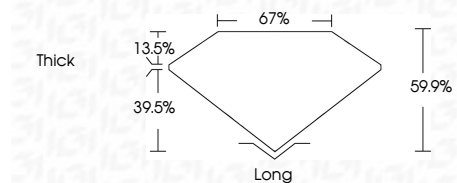
Red symbols indicate internal characteristics.  
Green symbols indicate external characteristics.

**COLOR**

D E F G H I J Faint Very Light Light

**CLARITY**

FL	IF	VS <sup>1-2</sup>	VS <sup>1-2</sup>	SI <sup>1-2</sup>	I <sup>1-3</sup>
Flawless	Internally Flawless	Very Very Slightly Included	Very Slightly Included	Slightly Included	Included



**ADDITIONAL GRADING INFORMATION**

Polish **EXCELLENT**  
Symmetry **EXCELLENT**  
Fluorescence **NONE**  
Inscription(s) **IGI LG788658730**  
Comments: This Laboratory Grown Diamond was created by Chemical Vapor Deposition (CVD) growth process.

**ADDITIONAL GRADING INFORMATION**

Polish **EXCELLENT**  
Symmetry **EXCELLENT**  
Fluorescence **NONE**  
Inscription(s) **IGI LG788658730**

Comments: This Laboratory Grown Diamond was created by Chemical Vapor Deposition (CVD) growth process.



April 7, 2026  
IGI Report No **LG788658730**  
**EMERALD CUT**  
1.07 CARAT  
Carat Weight **FANCY LIGHT YELLOW**  
Color Grade **VS 1**  
Depth **67%**  
Table **67%**  
Girdle **Thick**  
Culet **Long**  
Polish **EXCELLENT**  
Symmetry **EXCELLENT**  
Fluorescence **NONE**  
Inscription(s) **IGI LG788658730**  
Comments: This Laboratory Grown Diamond was created by Chemical Vapor Deposition (CVD) growth process.