



**ELECTRONIC COPY**

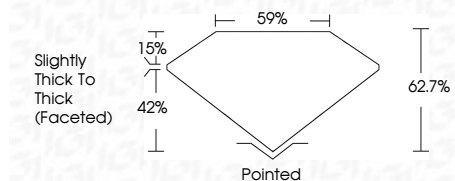
LG788658710  
Report verification at igi.org



April 7, 2026  
IGI Report Number **LG788658710**  
Description **LABORATORY GROWN DIAMOND**  
Shape and Cutting Style **PEAR MODIFIED BRILLIANT**  
Measurements **10.19 X 6.32 X 3.96 MM**

**GRADING RESULTS**

Carat Weight **1.77 CARAT**  
Color Grade **FANCY YELLOW**  
Clarity Grade **VS 1**



**ADDITIONAL GRADING INFORMATION**

Polish **EXCELLENT**  
Symmetry **EXCELLENT**  
Fluorescence **NONE**  
Inscription(s) **IGI LG788658710**  
Comments: This Laboratory Grown Diamond was created by Chemical Vapor Deposition (CVD) growth process.



April 7, 2026  
IGI Report No **LG788658710**  
**PEAR MODIFIED BRILLIANT**  
10.19 X 6.32 X 3.96 MM  
Carat Weight **1.77 CARAT**  
Color Grade **FANCY YELLOW**  
Clarity Grade **VS 1**  
Depth **42%**  
Table **15%**  
Girdle **Slightly Thick To Thick (Faceted)**  
Culet **Pointed**  
Polish **EXCELLENT**  
Symmetry **EXCELLENT**  
Fluorescence **NONE**  
Inscription(s) **IGI LG788658710**  
Comments: This Laboratory Grown Diamond was created by Chemical Vapor Deposition (CVD) growth process.

April 7, 2026  
IGI Report Number **LG788658710**  
Description **LABORATORY GROWN DIAMOND**  
Shape and Cutting Style **PEAR MODIFIED BRILLIANT**  
Measurements **10.19 X 6.32 X 3.96 MM**

**GRADING RESULTS**

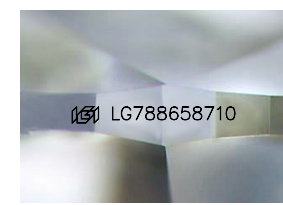
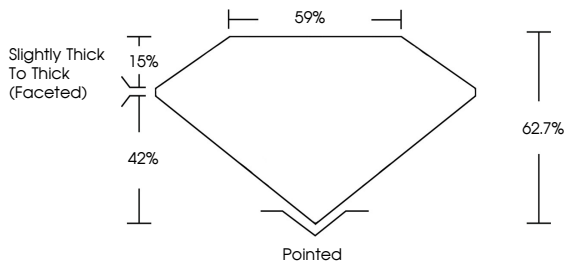
Carat Weight **1.77 CARAT**  
Color Grade **FANCY YELLOW**  
Clarity Grade **VS 1**

**ADDITIONAL GRADING INFORMATION**

Polish **EXCELLENT**  
Symmetry **EXCELLENT**  
Fluorescence **NONE**  
Inscription(s) **IGI LG788658710**

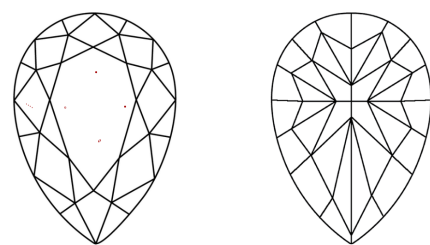
Comments: This Laboratory Grown Diamond was created by Chemical Vapor Deposition (CVD) growth process.

**PROPORTIONS**



Sample Image Used

**CLARITY CHARACTERISTICS**



**KEY TO SYMBOLS**

Red symbols indicate internal characteristics.  
Green symbols indicate external characteristics.

**COLOR**

|   |   |   |   |   |   |   |       |            |       |
|---|---|---|---|---|---|---|-------|------------|-------|
| D | E | F | G | H | I | J | Faint | Very Light | Light |
|---|---|---|---|---|---|---|-------|------------|-------|

**CLARITY**

|          |                     |                             |                        |                   |                  |
|----------|---------------------|-----------------------------|------------------------|-------------------|------------------|
| FL       | IF                  | VS <sup>1-2</sup>           | VS <sup>1-2</sup>      | SI <sup>1-2</sup> | I <sup>1-3</sup> |
| Flawless | Internally Flawless | Very Very Slightly Included | Very Slightly Included | Slightly Included | Included         |

