



ELECTRONIC COPY

LG788656732
Report verification at igi.org



April 2, 2026
IGI Report Number **LG788656732**
Description **LABORATORY GROWN DIAMOND**
Shape and Cutting Style **MODIFIED RECTANGULAR
CUSHION MIXED CUT**
Measurements **8.11 X 5.03 X 3.41 MM**
GRADING RESULTS
Carat Weight **1.25 CARAT**
Color Grade **D**
Clarity Grade **VVS 2**

April 2, 2026
IGI Report Number **LG788656732**
Description **LABORATORY GROWN DIAMOND**
Shape and Cutting Style **MODIFIED RECTANGULAR
CUSHION MIXED CUT**
Measurements **8.11 X 5.03 X 3.41 MM**

GRADING RESULTS

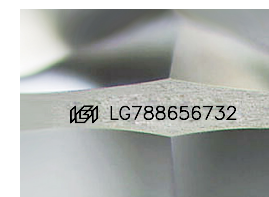
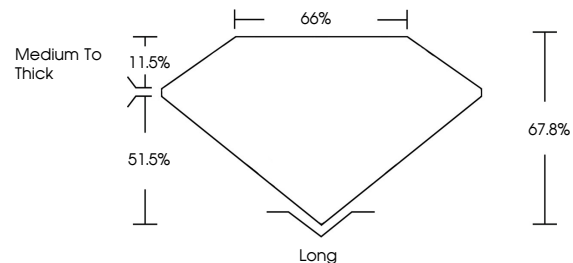
Carat Weight **1.25 CARAT**
Color Grade **D**
Clarity Grade **VVS 2**

ADDITIONAL GRADING INFORMATION

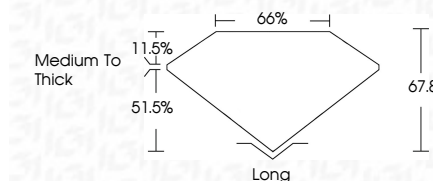
Polish **EXCELLENT**
Symmetry **EXCELLENT**
Fluorescence **NONE**
Inscription(s) **IGI LG788656732**

Comments: This Laboratory Grown Diamond was created by Chemical Vapor Deposition (CVD) growth process.
Type IIa

PROPORTIONS



Sample Image Used



COLOR

D E F G H I J Faint Very Light Light

CLARITY

| FL | IF | VVS ¹⁻² | VS ¹⁻² | SI ¹⁻² | I ¹⁻³ |
|----------|---------------------|-----------------------------|------------------------|-------------------|------------------|
| Flawless | Internally Flawless | Very Very Slightly Included | Very Slightly Included | Slightly Included | Included |

ADDITIONAL GRADING INFORMATION

Polish **EXCELLENT**
Symmetry **EXCELLENT**
Fluorescence **NONE**
Inscription(s) **IGI LG788656732**
Comments: This Laboratory Grown Diamond was created by Chemical Vapor Deposition (CVD) growth process.
Type IIa



April 2, 2026
IGI Report No **LG788656732**
MODIFIED RECTANGULAR CUSHION MIXED CUT
8.11 X 5.03 X 3.41 MM
Carat Weight **1.25 CARAT**
Color Grade **D**
Clarity Grade **VVS 2**
Depth **67.8%**
Table **65%**
Girdle **Medium To Thick**
Culet **Long**
Polish **EXCELLENT**
Symmetry **EXCELLENT**
Fluorescence **NONE**
Inscription(s) **IGI LG788656732**
Comments: This Laboratory Grown Diamond was created by Chemical Vapor Deposition (CVD) growth process.
Type IIa