



**ELECTRONIC COPY**

LG788648953  
Report verification at igi.org



April 10, 2026  
IGI Report Number **LG788648953**  
Description **LABORATORY GROWN DIAMOND**  
Shape and Cutting Style **CUSHION MODIFIED BRILLIANT**  
Measurements **10.74 X 7.63 X 5.18 MM**  
**GRADING RESULTS**  
Carat Weight **4.04 CARATS**  
Color Grade **FANCY VIVID YELLOW**  
Clarity Grade **VS 1**

April 10, 2026  
IGI Report Number **LG788648953**  
Description **LABORATORY GROWN DIAMOND**  
Shape and Cutting Style **CUSHION MODIFIED BRILLIANT**  
Measurements **10.74 X 7.63 X 5.18 MM**

**GRADING RESULTS**

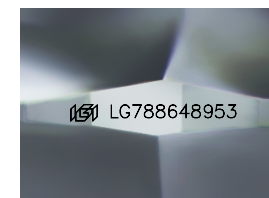
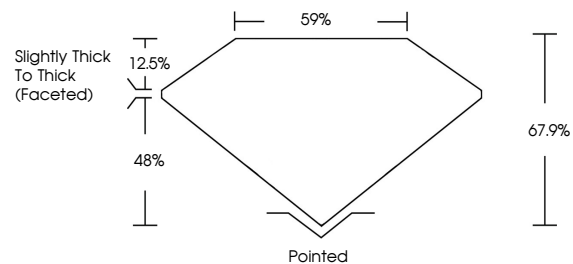
Carat Weight **4.04 CARATS**  
Color Grade **FANCY VIVID YELLOW**  
Clarity Grade **VS 1**

**ADDITIONAL GRADING INFORMATION**

Polish **EXCELLENT**  
Symmetry **EXCELLENT**  
Fluorescence **NONE**  
Inscription(s) **LG788648953**

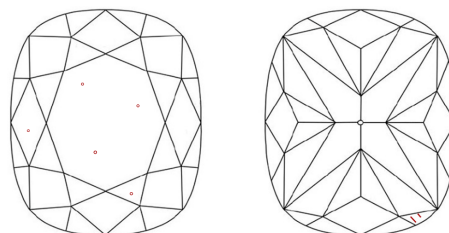
Comments: This Laboratory Grown Diamond was created by Chemical Vapor Deposition (CVD) growth process.

**PROPORTIONS**



Sample Image Used

**CLARITY CHARACTERISTICS**



**KEY TO SYMBOLS**

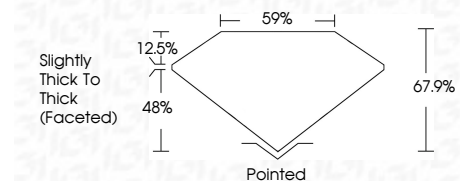
Red symbols indicate internal characteristics.  
Green symbols indicate external characteristics.

**COLOR**

D E F G H I J Faint Very Light Light

**CLARITY**

FL	IF	VS <sup>1-2</sup>	VS <sup>1-2</sup>	SI <sup>1-2</sup>	I <sup>1-3</sup>
Flawless	Internally Flawless	Very Very Slightly Included	Very Slightly Included	Slightly Included	Included



**ADDITIONAL GRADING INFORMATION**

Polish **EXCELLENT**  
Symmetry **EXCELLENT**  
Fluorescence **NONE**  
Inscription(s) **LG788648953**  
Comments: This Laboratory Grown Diamond was created by Chemical Vapor Deposition (CVD) growth process.



April 10, 2026  
IGI Report No **LG788648953**  
**CUSHION MODIFIED BRILLIANT**  
**10.74 X 7.63 X 5.18 MM**  
**4.04 CARATS**  
Carat Weight **FANCY VIVID YELLOW**  
Color Grade **VS 1**  
Depth **67.9%**  
Table **59%**  
Girdle **Slightly Thick To Thick (Faceted)**  
Culet **Pointed**  
Polish **EXCELLENT**  
Symmetry **EXCELLENT**  
Fluorescence **NONE**  
Inscription(s) **LG788648953**  
Comments: This Laboratory Grown Diamond was created by Chemical Vapor Deposition (CVD) growth process.