



ELECTRONIC COPY

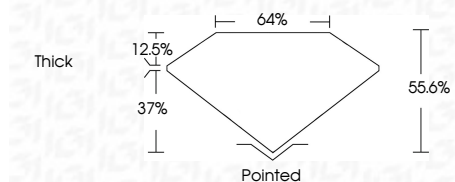
LG788648939
Report verification at igi.org



April 20, 2026
IGI Report Number **LG788648939**
Description **LABORATORY GROWN DIAMOND**
Shape and Cutting Style **HEXAGONAL STEP CUT**
Measurements **9.38 X 8.18 X 4.55 MM**

GRADING RESULTS

Carat Weight **2.52 CARATS**
Color Grade **FANCY YELLOW**
Clarity Grade **VVS 2**



ADDITIONAL GRADING INFORMATION

Polish **EXCELLENT**
Symmetry **EXCELLENT**
Fluorescence **NONE**
Inscription(s) **IGI LG788648939**
Comments: This Laboratory Grown Diamond was created by Chemical Vapor Deposition (CVD) growth process.



IGI

April 20, 2026
IGI Report No LG788648939
HEXAGONAL STEP CUT
9.38 X 8.18 X 4.55 MM
2.52 CARATS
FANCY YELLOW
VVS 2
55.6%
64%
Thick
Pointed
EXCELLENT
EXCELLENT
NONE
IGI LG788648939

Comments: This Laboratory Grown Diamond was created by Chemical Vapor Deposition (CVD) growth process.

April 20, 2026
IGI Report Number **LG788648939**
Description **LABORATORY GROWN DIAMOND**
Shape and Cutting Style **HEXAGONAL STEP CUT**
Measurements **9.38 X 8.18 X 4.55 MM**

GRADING RESULTS

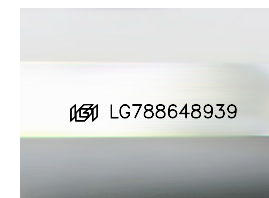
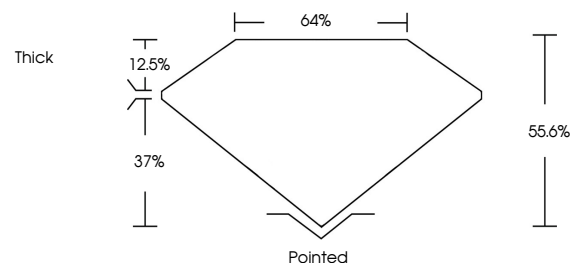
Carat Weight **2.52 CARATS**
Color Grade **FANCY YELLOW**
Clarity Grade **VVS 2**

ADDITIONAL GRADING INFORMATION

Polish **EXCELLENT**
Symmetry **EXCELLENT**
Fluorescence **NONE**
Inscription(s) **IGI LG788648939**

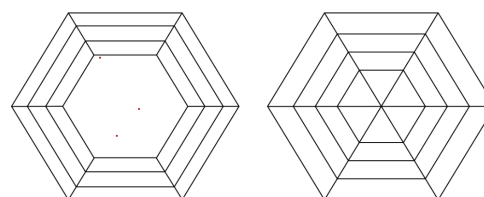
Comments: This Laboratory Grown Diamond was created by Chemical Vapor Deposition (CVD) growth process.

PROPORTIONS



Sample Image Used

CLARITY CHARACTERISTICS



KEY TO SYMBOLS

Red symbols indicate internal characteristics.
Green symbols indicate external characteristics.

COLOR

D E F G H I J Faint Very Light Light

CLARITY

FL	IF	VVS ¹⁻²	VS ¹⁻²	SI ¹⁻²	I ¹⁻³
Flawless	Internally Flawless	Very Very Slightly Included	Very Slightly Included	Slightly Included	Included

