



**ELECTRONIC COPY**

LG788648910  
Report verification at igi.org



April 7, 2026

IGI Report Number **LG788648910**

Description **LABORATORY GROWN DIAMOND**

Shape and Cutting Style **EMERALD CUT**

Measurements **15.84 X 10.35 X 6.76 MM**

**GRADING RESULTS**

Carat Weight **11.55 CARATS**

Color Grade **F**

Clarity Grade **VVS 2**

April 7, 2026  
IGI Report Number **LG788648910**  
Description **LABORATORY GROWN DIAMOND**  
Shape and Cutting Style **EMERALD CUT**  
Measurements **15.84 X 10.35 X 6.76 MM**

**GRADING RESULTS**

Carat Weight **11.55 CARATS**

Color Grade **F**

Clarity Grade **VVS 2**

**ADDITIONAL GRADING INFORMATION**

Polish **EXCELLENT**

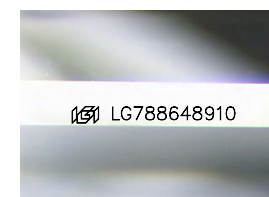
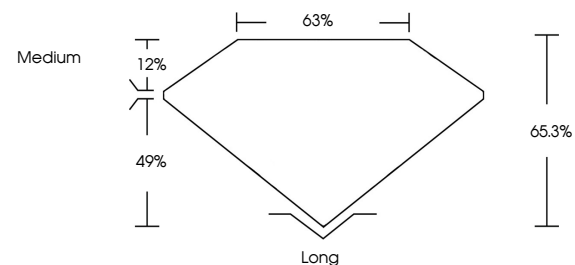
Symmetry **EXCELLENT**

Fluorescence **NONE**

Inscription(s) **IGI LG788648910**

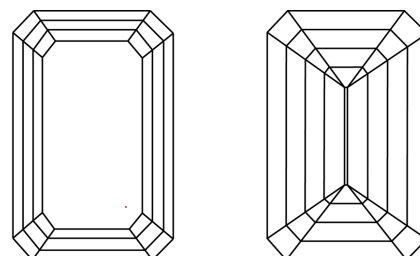
Comments: This Laboratory Grown Diamond was created by Chemical Vapor Deposition (CVD) growth process. Type IIa

**PROPORTIONS**



Sample Image Used

**CLARITY CHARACTERISTICS**



**KEY TO SYMBOLS**

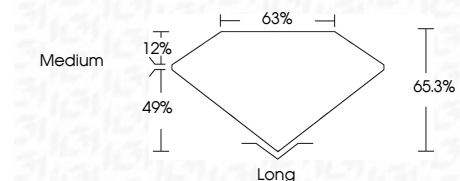
Red symbols indicate internal characteristics.  
Green symbols indicate external characteristics.

**COLOR**

D E F G H I J Faint Very Light Light

**CLARITY**

FL	IF	VVS <sup>1-2</sup>	VS <sup>1-2</sup>	SI <sup>1-2</sup>	I <sup>1-3</sup>
Flawless	Internally Flawless	Very Very Slightly Included	Very Slightly Included	Slightly Included	Included



**ADDITIONAL GRADING INFORMATION**

Polish **EXCELLENT**

Symmetry **EXCELLENT**

Fluorescence **NONE**

Inscription(s) **IGI LG788648910**

Comments: This Laboratory Grown Diamond was created by Chemical Vapor Deposition (CVD) growth process. Type IIa



**IGI**



April 7, 2026  
IGI Report No **LG788648910**  
**EMERALD CUT**  
11.55 CARATS **F**  
Carat Weight **VVS 2**  
Color Grade **65.3%**  
Clarity Grade **63%**  
Table **Medium**  
Girdle **Long**  
Culet **EXCELLENT**  
Polish **EXCELLENT**  
Symmetry **NONE**  
Fluorescence **IGI LG788648910**  
Inscription(s)

Comments: This Laboratory Grown Diamond was created by Chemical Vapor Deposition (CVD) growth process. Type IIa