



LABORATORY GROWN DIAMOND REPORT

April 4, 2026
 IGI Report Number **LG788648816**
 Description **LABORATORY GROWN DIAMOND**
 Shape and Cutting Style **OCTAGONAL STEP CUT**
 Measurements **5.82 X 5.92 X 3.57 MM**

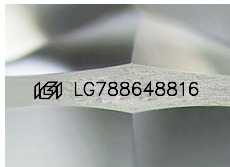
GRADING RESULTS

Carat Weight **0.99 CARAT**
 Color Grade **G**
 Clarity Grade **VS 2**

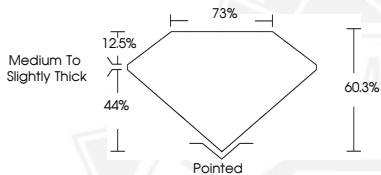
ADDITIONAL GRADING INFORMATION

Polish **VERY GOOD**
 Symmetry **VERY GOOD**
 Fluorescence **NONE**
 Inscription(s) **IGI LG788648816**

Comments: This Laboratory Grown Diamond was created by Chemical Vapor Deposition (CVD) growth process. Type IIa



Sample Image Used



April 4, 2026
 IGI Report Number **LG788648816**
OCTAGONAL STEP CUT
LABORATORY GROWN DIAMOND
5.82 X 5.92 X 3.57 MM
 Carat Weight **0.99 CARAT**
 Color Grade **G**
 Clarity Grade **VS 2**
 Polish **VERY GOOD**
 Symmetry **VERY GOOD**
 Fluorescence **NONE**
 Inscription(s) **IGI LG788648816**

Comments: This Laboratory Grown Diamond was created by Chemical Vapor Deposition (CVD) growth process. Type IIa



April 4, 2026
 IGI Report Number **LG788648816**
OCTAGONAL STEP CUT
LABORATORY GROWN DIAMOND
5.82 X 5.92 X 3.57 MM
 Carat Weight **0.99 CARAT**
 Color Grade **G**
 Clarity Grade **VS 2**
 Polish **VERY GOOD**
 Symmetry **VERY GOOD**
 Fluorescence **NONE**
 Inscription(s) **IGI LG788648816**

Comments: This Laboratory Grown Diamond was created by Chemical Vapor Deposition (CVD) growth process. Type IIa



THIS DOCUMENT WAS PRODUCED WITH THE FOLLOWING SECURITY MEASURES: SPECIAL DOCUMENT PAPER, INK SCREENS, WATERMARK, BACKGROUND DESIGNS, HOLOGRAM AND OTHER SECURITY FEATURES NOT LISTED AND DO EXCEED DOCUMENT SECURITY INDUSTRY GUIDELINES.