



LABORATORY GROWN DIAMOND REPORT

April 3, 2026
 IGI Report Number **LG788645694**
 Description **LABORATORY GROWN DIAMOND**
 Shape and Cutting Style **PEAR BRILLIANT**
 Measurements **7.38 X 4.31 X 2.52 MM**

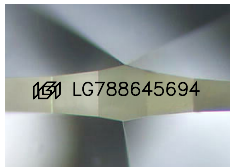
GRADING RESULTS

Carat Weight **0.51 CARAT**
 Color Grade **D**
 Clarity Grade **VS 2**

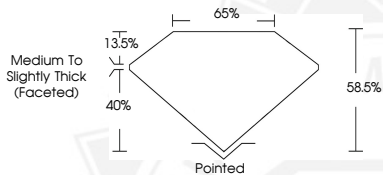
ADDITIONAL GRADING INFORMATION

Polish **VERY GOOD**
 Symmetry **VERY GOOD**
 Fluorescence **NONE**
 Inscription(s) **IGI LG788645694**

Comments: This Laboratory Grown Diamond was created by
 Chemical Vapor Deposition (CVD) growth process.
 Type IIa



Sample Image Used



April 3, 2026
 IGI Report Number **LG788645694**
PEAR BRILLIANT
LABORATORY GROWN DIAMOND
7.38 X 4.31 X 2.52 MM
 Carat Weight **0.51 CARAT**
 Color Grade **D**
 Clarity Grade **VS 2**
 Polish **VERY GOOD**
 Symmetry **VERY GOOD**
 Fluorescence **NONE**
 Inscription(s) **IGI LG788645694**

Comments: This Laboratory Grown Diamond was created by
 Chemical Vapor Deposition (CVD)
 growth process. Type IIa



April 3, 2026
 IGI Report Number **LG788645694**
PEAR BRILLIANT
LABORATORY GROWN DIAMOND
7.38 X 4.31 X 2.52 MM
 Carat Weight **0.51 CARAT**
 Color Grade **D**
 Clarity Grade **VS 2**
 Polish **VERY GOOD**
 Symmetry **VERY GOOD**
 Fluorescence **NONE**
 Inscription(s) **IGI LG788645694**

Comments: This Laboratory Grown Diamond was created by
 Chemical Vapor Deposition (CVD)
 growth process. Type IIa



THIS DOCUMENT WAS PRODUCED WITH THE FOLLOWING SECURITY MEASURES: SPECIAL DOCUMENT PAPER, INK SCREENS, WATERMARK, BACKGROUND DESIGNS, HOLOGRAM AND OTHER SECURITY FEATURES NOT LISTED AND DO EXCEED DOCUMENT SECURITY INDUSTRY GUIDELINES.