



ELECTRONIC COPY

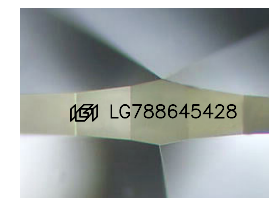
LG788645428
Report verification at igi.org



May 20, 2026
IGI Report Number **LG788645428**
Description **LABORATORY GROWN DIAMOND**
Shape and Cutting Style **HEART MODIFIED BRILLIANT**
Measurements **7.90 X 9.12 X 4.57 MM**

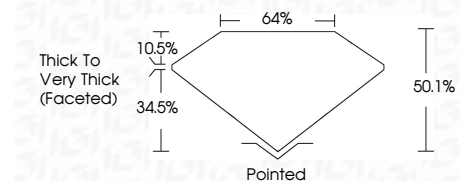
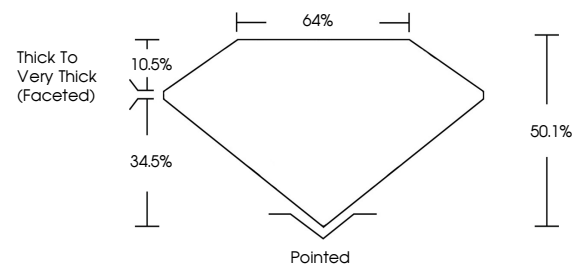
GRADING RESULTS

Carat Weight **2.36 CARATS**
Color Grade **FANCY VIVID PINK**
Clarity Grade **VS 2**

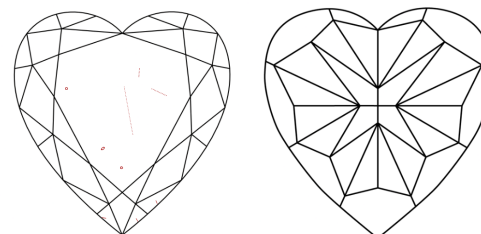


Sample Image Used

PROPORTIONS



CLARITY CHARACTERISTICS



KEY TO SYMBOLS

Red symbols indicate internal characteristics.
Green symbols indicate external characteristics.

COLOR

D E F G H I J Faint Very Light Light

CLARITY

FL	IF	VS ¹⁻²	VS ¹⁻²	SI ¹⁻²	I ¹⁻³
Flawless	Internally Flawless	Very Very Slightly Included	Very Slightly Included	Slightly Included	Included

ADDITIONAL GRADING INFORMATION

Polish **EXCELLENT**
Symmetry **EXCELLENT**
Fluorescence **SLIGHT**
Inscription(s) **(IGI) LG788645428**

Comments: This Laboratory Grown Diamond was created by Chemical Vapor Deposition (CVD) growth process. Indications of post-growth treatment.



IGI



May 20, 2026
IGI Report No **LG788645428**
HEART MODIFIED BRILLIANT
7.90 X 9.12 X 4.57 MM
2.36 CARATS
FANCY VIVID PINK
VS 2
60.1%
64%
Thick to Very Thick (Faceted)
Pointed
EXCELLENT
EXCELLENT
SLIGHT
(IGI) LG788645428

Comments: This Laboratory Grown Diamond was created by Chemical Vapor Deposition (CVD) growth process. Indications of post-growth treatment.