



April 3, 2026

IGI Report Number **LG788644987**

**OVAL BRILLIANT
LABORATORY GROWN DIAMOND
7.99 X 5.26 X 3.03 MM**

Carat Weight	0.80 CARAT
Color Grade	E
Clarity Grade	VVS 1
Polish	VERY GOOD
Symmetry	VERY GOOD
Fluorescence	NONE
Inscription(s)	IGI LG788644987

Comments: This Laboratory Grown Diamond was created by Chemical Vapor Deposition (CVD) growth process. Type IIa

LABORATORY GROWN DIAMOND REPORT

April 3, 2026
IGI Report Number **LG788644987**
Description **LABORATORY GROWN DIAMOND**
Shape and Cutting Style **OVAL BRILLIANT**
Measurements **7.99 X 5.26 X 3.03 MM**

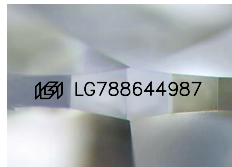
GRADING RESULTS

Carat Weight **0.80 CARAT**
Color Grade **E**
Clarity Grade **VVS 1**

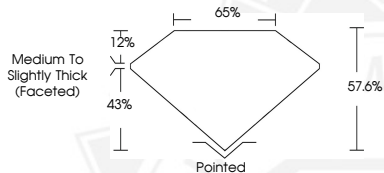
ADDITIONAL GRADING INFORMATION

Polish **VERY GOOD**
Symmetry **VERY GOOD**
Fluorescence **NONE**
Inscription(s) **IGI LG788644987**

Comments: This Laboratory Grown Diamond was created by Chemical Vapor Deposition (CVD) growth process. Type IIa



Sample Image Used



April 3, 2026

IGI Report Number **LG788644987**

**OVAL BRILLIANT
LABORATORY GROWN DIAMOND
7.99 X 5.26 X 3.03 MM**

Carat Weight	0.80 CARAT
Color Grade	E
Clarity Grade	VVS 1
Polish	VERY GOOD
Symmetry	VERY GOOD
Fluorescence	NONE
Inscription(s)	IGI LG788644987

Comments: This Laboratory Grown Diamond was created by Chemical Vapor Deposition (CVD) growth process. Type IIa



THIS DOCUMENT WAS PRODUCED WITH THE FOLLOWING SECURITY MEASURES: SPECIAL DOCUMENT PAPER, INK SCREENS, WATERMARK, BACKGROUND DESIGNS, HOLOGRAM AND OTHER SECURITY FEATURES NOT LISTED AND DO EXCEED DOCUMENT SECURITY INDUSTRY GUIDELINES.