



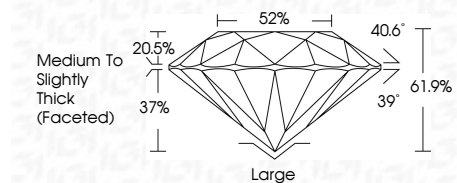
**ELECTRONIC COPY**

LG788643339  
Report verification at igi.org



April 7, 2026  
IGI Report Number **LG788643339**  
Description **LABORATORY GROWN DIAMOND**  
Shape and Cutting Style **OLD EUROPEAN CUT**  
Measurements **9.01 - 9.06 X 5.59 MM**

**GRADING RESULTS**  
Carat Weight **3.08 CARATS**  
Color Grade **F**  
Clarity Grade **VVS 2**

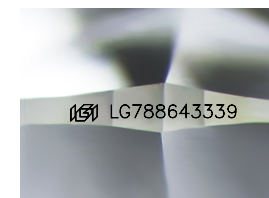


**ADDITIONAL GRADING INFORMATION**  
Polish **EXCELLENT**  
Symmetry **EXCELLENT**  
Fluorescence **NONE**  
Inscription(s) **IGI LG788643339**  
Comments: This Laboratory Grown Diamond was created by Chemical Vapor Deposition (CVD) growth process. Type IIa



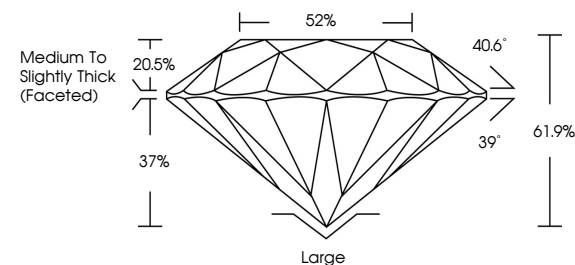
April 7, 2026  
IGI Report No LG788643339  
**OLD EUROPEAN CUT**  
3.08 CARATS **F**  
Carat Weight **3.08**  
Color Grade **VVS 2**  
Depth **61.9%**  
Table **52%**  
Girdle **Medium to Slightly Thick (Faceted)**  
Culet **Large**  
Polish **EXCELLENT**  
Symmetry **EXCELLENT**  
Fluorescence **NONE**  
Inscription(s) **IGI LG788643339**

Comments: This Laboratory Grown Diamond was created by Chemical Vapor Deposition (CVD) growth process. Type IIa

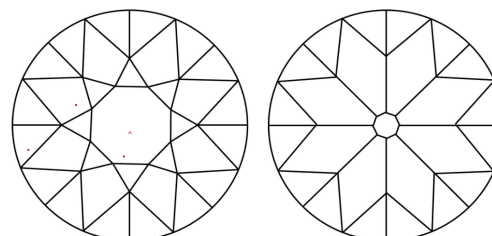


Sample Image Used

**PROPORTIONS**



**CLARITY CHARACTERISTICS**



**KEY TO SYMBOLS**

Red symbols indicate internal characteristics.  
Green symbols indicate external characteristics.

**COLOR**

D E F G H I J Faint Very Light Light

**CLARITY**

FL	IF	VS <sup>1-2</sup>	VS <sup>1-2</sup>	SI <sup>1-2</sup>	I <sup>1-3</sup>
Flawless	Internally Flawless	Very Very Slightly Included	Very Slightly Included	Slightly Included	Included

