



ELECTRONIC COPY

LG788643320
Report verification at igi.org



April 6, 2026

IGI Report Number **LG788643320**

Description **LABORATORY GROWN DIAMOND**

Shape and Cutting Style **ROUND POLYGON MIXED CUT**

Measurements **7.72 - 7.70 X 4.82 MM**

GRADING RESULTS

Carat Weight **1.77 CARAT**

Color Grade **F**

Clarity Grade **VS 1**

LABORATORY GROWN DIAMOND REPORT

April 6, 2026

IGI Report Number **LG788643320**

Description **LABORATORY GROWN DIAMOND**

Shape and Cutting Style **ROUND POLYGON MIXED CUT**

Measurements **7.72 - 7.70 X 4.82 MM**

GRADING RESULTS

Carat Weight **1.77 CARAT**

Color Grade **F**

Clarity Grade **VS 1**

ADDITIONAL GRADING INFORMATION

Polish **EXCELLENT**

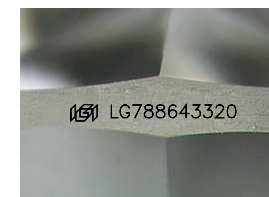
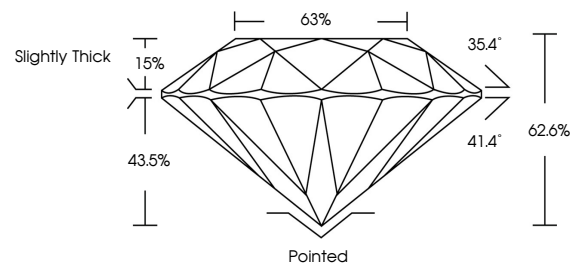
Symmetry **EXCELLENT**

Fluorescence **NONE**

Inscription(s) **IGI LG788643320**

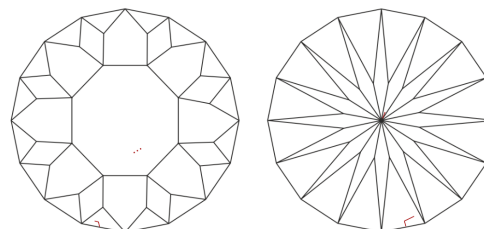
Comments: This Laboratory Grown Diamond was created by Chemical Vapor Deposition (CVD) growth process. Type IIa

PROPORTIONS



Sample Image Used

CLARITY CHARACTERISTICS



KEY TO SYMBOLS

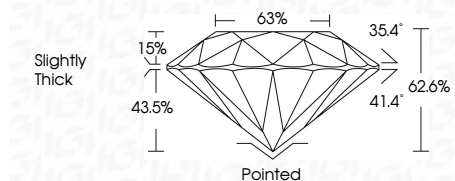
Red symbols indicate internal characteristics.
Green symbols indicate external characteristics.

COLOR

D E F G H I J Faint Very Light Light

CLARITY

FL	IF	VS ¹⁻²	VS ¹⁻²	SI ¹⁻²	I ¹⁻³
Flawless	Internally Flawless	Very Very Slightly Included	Very Slightly Included	Slightly Included	Included



ADDITIONAL GRADING INFORMATION

Polish **EXCELLENT**

Symmetry **EXCELLENT**

Fluorescence **NONE**

Inscription(s) **IGI LG788643320**

Comments: This Laboratory Grown Diamond was created by Chemical Vapor Deposition (CVD) growth process. Type IIa



April 6, 2026	IGI Report No LG788643320	1.77 CARAT	F	VS 1	62.6%	63%	Slightly Thick	Pointed	EXCELLENT	EXCELLENT	NONE	IGI LG788643320
IGI Report No LG788643320	ROUND POLYGON MIXED CUT	Carat Weight	Color Grade	Clarity Grade	Table	Girdle	Culet	Polish	Symmetry	Fluorescence	Inscription(s)	Comments: This Laboratory Grown Diamond was created by Chemical Vapor Deposition (CVD) growth process. Type IIa