



ELECTRONIC COPY

LG788643127
Report verification at igi.org



April 3, 2026

IGI Report Number **LG788643127**

Description **LABORATORY GROWN DIAMOND**

Shape and Cutting Style **ROUND BRILLIANT**

Measurements **7.47 - 7.51 X 4.61 MM**

GRADING RESULTS

Carat Weight **1.59 CARAT**

Color Grade **D**

Clarity Grade **VS 1**

Cut Grade **IDEAL**

April 3, 2026

IGI Report Number **LG788643127**

Description **LABORATORY GROWN DIAMOND**

Shape and Cutting Style **ROUND BRILLIANT**

Measurements **7.47 - 7.51 X 4.61 MM**

GRADING RESULTS

Carat Weight **1.59 CARAT**

Color Grade **D**

Clarity Grade **VS 1**

Cut Grade **IDEAL**

ADDITIONAL GRADING INFORMATION

Polish **EXCELLENT**

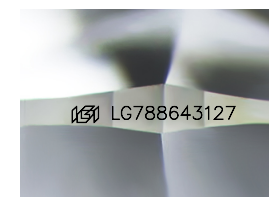
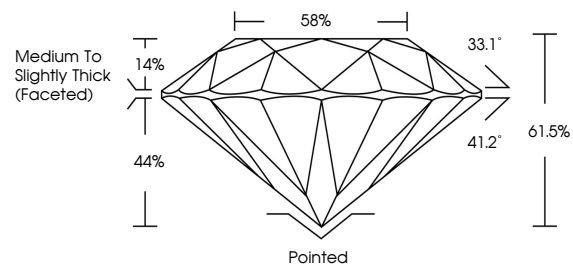
Symmetry **EXCELLENT**

Fluorescence **NONE**

Inscription(s) **LG788643127**

Comments: This Laboratory Grown Diamond was created by Chemical Vapor Deposition (CVD) growth process. Type IIa

PROPORTIONS



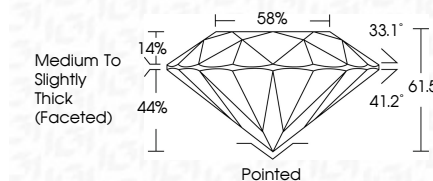
Sample Image Used

COLOR

D E F G H I J Faint Very Light Light

CLARITY

FL	IF	VS ¹⁻²	VS ¹⁻²	SI ¹⁻²	I ¹⁻³
Flawless	Internally Flawless	Very Very Slightly Included	Very Slightly Included	Slightly Included	Included



ADDITIONAL GRADING INFORMATION

Polish **EXCELLENT**

Symmetry **EXCELLENT**

Fluorescence **NONE**

Inscription(s) **LG788643127**

Comments: This Laboratory Grown Diamond was created by Chemical Vapor Deposition (CVD) growth process. Type IIa



April 3, 2026
IGI Report No LG788643127
ROUND BRILLIANT

7.47 - 7.51 X 4.61 MM

Carat Weight **1.59 CARAT**
Color Grade **D**
Clarity Grade **VS 1**
Depth **IDEAL**
Table **61.5%**
Girdle **88%**
Medium To Slightly Thick (Faceted)

Culet **Pointed**
Polish **EXCELLENT**
Symmetry **EXCELLENT**
Fluorescence **NONE**
Inscription(s) **LG788643127**

Comments: This Laboratory Grown Diamond was created by Chemical Vapor Deposition (CVD) growth process. Type IIa