



ELECTRONIC COPY

LG788642211
Report verification at igi.org



April 7, 2026
IGI Report Number LG788642211
Description LABORATORY GROWN DIAMOND
Shape and Cutting Style CUSHION MODIFIED BRILLIANT
Measurements 10.14 X 7.49 X 5.09 MM
GRADING RESULTS
Carat Weight 3.06 CARATS
Color Grade G
Clarity Grade VVS 2

LABORATORY GROWN DIAMOND REPORT

April 7, 2026
IGI Report Number LG788642211
Description LABORATORY GROWN DIAMOND
Shape and Cutting Style CUSHION MODIFIED BRILLIANT
Measurements 10.14 X 7.49 X 5.09 MM

GRADING RESULTS

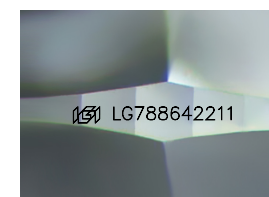
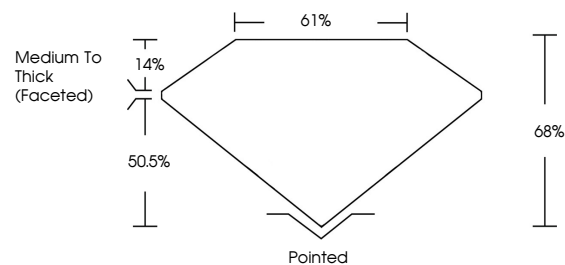
Carat Weight 3.06 CARATS
Color Grade G
Clarity Grade VVS 2

ADDITIONAL GRADING INFORMATION

Polish EXCELLENT
Symmetry EXCELLENT
Fluorescence NONE
Inscription(s) IGI LG788642211

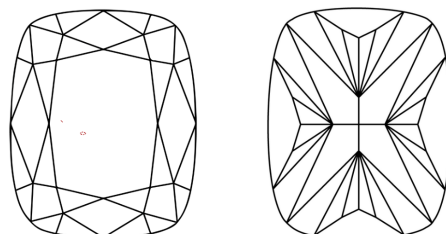
Comments: This Laboratory Grown Diamond was created by Chemical Vapor Deposition (CVD) growth process. Type IIa

PROPORTIONS



Sample Image Used

CLARITY CHARACTERISTICS



KEY TO SYMBOLS

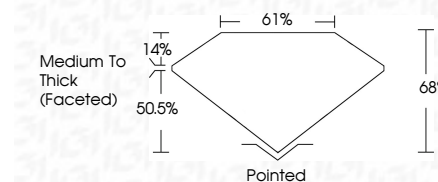
Red symbols indicate internal characteristics.
Green symbols indicate external characteristics.

COLOR

D E F G H I J Faint Very Light Light

CLARITY

FL IF VS 1-2 VS 1-2 SI 1-2 I 1-3
Flawless Internally Flawless Very Very Slightly Included Very Slightly Included Slightly Included Included



ADDITIONAL GRADING INFORMATION

Polish EXCELLENT
Symmetry EXCELLENT
Fluorescence NONE
Inscription(s) IGI LG788642211
Comments: This Laboratory Grown Diamond was created by Chemical Vapor Deposition (CVD) growth process. Type IIa



April 7, 2026
IGI Report No LG788642211
CUSHION MODIFIED BRILLIANT
10.14 X 7.49 X 5.09 MM
3.06 CARATS G
VS 2
68% 61%
Medium To Thick (Faceted)
Pointed
EXCELLENT EXCELLENT
NONE
IGI LG788642211
Comments: This Laboratory Grown Diamond was created by Chemical Vapor Deposition (CVD) growth process. Type IIa