



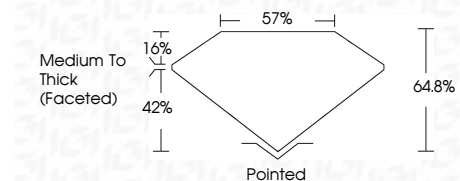
**ELECTRONIC COPY**

LG788638177  
Report verification at igi.org



April 6, 2026  
IGI Report Number **LG788638177**  
Description **LABORATORY GROWN DIAMOND**  
Shape and Cutting Style **MARQUISE BRILLIANT**  
Measurements **11.73 X 5.83 X 3.78 MM**

**GRADING RESULTS**  
Carat Weight **1.49 CARAT**  
Color Grade **E**  
Clarity Grade **VS 1**



**ADDITIONAL GRADING INFORMATION**  
Polish **EXCELLENT**  
Symmetry **EXCELLENT**  
Fluorescence **NONE**  
Inscription(s) **IGI LG788638177**  
Comments: This Laboratory Grown Diamond was created by Chemical Vapor Deposition (CVD) growth process. Type IIa



April 6, 2026  
IGI Report No LG788638177  
**MARQUISE BRILLIANT**  
11.73 X 5.83 X 3.78 MM  
1.49 CARAT  
E  
VS 1  
64.8%  
42%  
57%  
Medium To Thick (Faceted)  
Pointed  
EXCELLENT  
EXCELLENT  
NONE  
IGI LG788638177  
Comments: This Laboratory Grown Diamond was created by Chemical Vapor Deposition (CVD) growth process. Type IIa

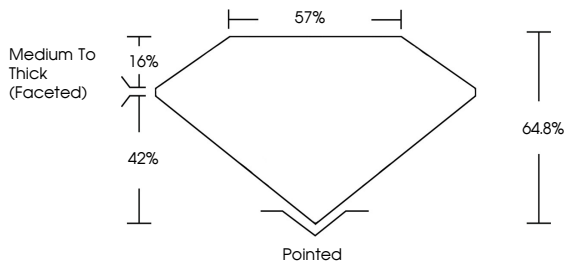
April 6, 2026  
IGI Report Number **LG788638177**  
Description **LABORATORY GROWN DIAMOND**  
Shape and Cutting Style **MARQUISE BRILLIANT**  
Measurements **11.73 X 5.83 X 3.78 MM**

**GRADING RESULTS**  
Carat Weight **1.49 CARAT**  
Color Grade **E**  
Clarity Grade **VS 1**

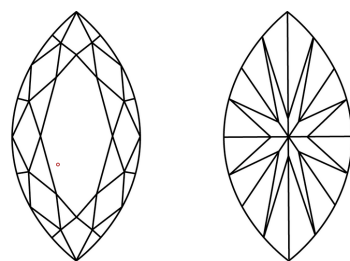
**ADDITIONAL GRADING INFORMATION**  
Polish **EXCELLENT**  
Symmetry **EXCELLENT**  
Fluorescence **NONE**  
Inscription(s) **IGI LG788638177**

Comments: This Laboratory Grown Diamond was created by Chemical Vapor Deposition (CVD) growth process. Type IIa

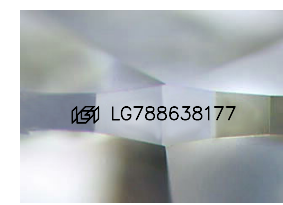
**PROPORTIONS**



**CLARITY CHARACTERISTICS**



**KEY TO SYMBOLS**  
Red symbols indicate internal characteristics.  
Green symbols indicate external characteristics.



Sample Image Used

**COLOR**

D	E	F	G	H	I	J	Faint	Very Light	Light
---	---	---	---	---	---	---	-------	------------	-------

**CLARITY**

FL	IF	VS <sup>1-2</sup>	VS <sup>1-2</sup>	SI <sup>1-2</sup>	I <sup>1-3</sup>
Flawless	Internally Flawless	Very Very Slightly Included	Very Slightly Included	Slightly Included	Included

