



ELECTRONIC COPY

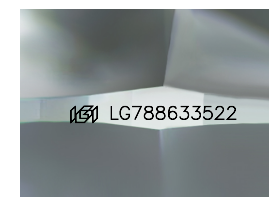
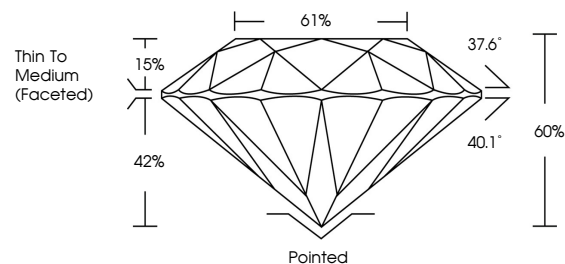
LG788633522
Report verification at igi.org



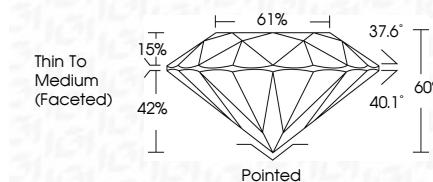
April 10, 2026
IGI Report Number **LG788633522**
Description **LABORATORY GROWN DIAMOND**
Shape and Cutting Style **ROUND BRILLIANT**
Measurements **8.25 - 8.32 X 4.97 MM**
GRADING RESULTS
Carat Weight **2.11 CARATS**
Color Grade **FANCY LIGHT PINKISH BROWN**
Clarity Grade **VS 1**
Cut Grade **VERY GOOD**

April 10, 2026
IGI Report Number **LG788633522**
Description **LABORATORY GROWN DIAMOND**
Shape and Cutting Style **ROUND BRILLIANT**
Measurements **8.25 - 8.32 X 4.97 MM**
GRADING RESULTS
Carat Weight **2.11 CARATS**
Color Grade **FANCY LIGHT PINKISH BROWN**
Clarity Grade **VS 1**
Cut Grade **VERY GOOD**

PROPORTIONS



Sample Image Used



ADDITIONAL GRADING INFORMATION
Polish **VERY GOOD**
Symmetry **EXCELLENT**
Fluorescence **SLIGHT**
Inscription(s) **IGI LG788633522**

Comments: This Laboratory Grown Diamond was created by Chemical Vapor Deposition (CVD) growth process. Indications of post-growth treatment.

COLOR

D E F G H I J Faint Very Light Light

CLARITY

FL	IF	VS ¹⁻²	VS ¹⁻²	SI ¹⁻²	I ¹⁻³
Flawless	Internally Flawless	Very Very Slightly Included	Very Slightly Included	Slightly Included	Included

ADDITIONAL GRADING INFORMATION

Polish **VERY GOOD**
Symmetry **EXCELLENT**
Fluorescence **SLIGHT**
Inscription(s) **IGI LG788633522**
Comments: This Laboratory Grown Diamond was created by Chemical Vapor Deposition (CVD) growth process. Indications of post-growth treatment.



April 10, 2026
IGI Report No LG788633522
ROUND BRILLIANT
8.25 - 8.32 X 4.97 MM
2.11 CARATS
FANCY LIGHT PINKISH BROWN
VERY GOOD
VS 1
60%
61%
Thin To Medium (Faceted)
Pointed
VERY GOOD
EXCELLENT
SLIGHT
IGI LG788633522
Comments: This Laboratory Grown Diamond was created by Chemical Vapor Deposition (CVD) growth process. Indications of post-growth treatment.