



ELECTRONIC COPY

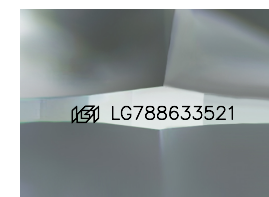
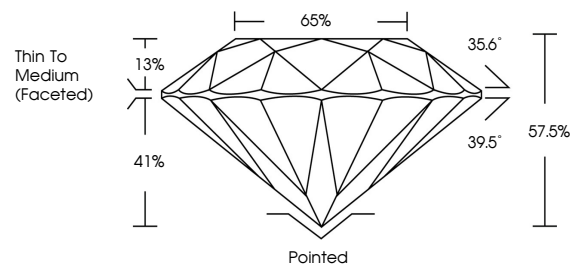
LG788633521
Report verification at igi.org



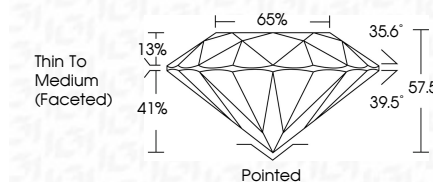
April 11, 2026
IGI Report Number **LG788633521**
Description **LABORATORY GROWN DIAMOND**
Shape and Cutting Style **ROUND BRILLIANT**
Measurements **7.40 - 7.48 X 4.28 MM**
GRADING RESULTS
Carat Weight **1.49 CARAT**
Color Grade **U-V**
Clarity Grade **VS 2**
Cut Grade **VERY GOOD**

April 11, 2026
IGI Report Number **LG788633521**
Description **LABORATORY GROWN DIAMOND**
Shape and Cutting Style **ROUND BRILLIANT**
Measurements **7.40 - 7.48 X 4.28 MM**
GRADING RESULTS
Carat Weight **1.49 CARAT**
Color Grade **U-V**
Clarity Grade **VS 2**
Cut Grade **VERY GOOD**

PROPORTIONS



Sample Image Used



ADDITIONAL GRADING INFORMATION
Polish **VERY GOOD**
Symmetry **VERY GOOD**
Fluorescence **VERY SLIGHT**
Inscription(s) **IGI LG788633521**
Comments: This Laboratory Grown Diamond was created by Chemical Vapor Deposition (CVD) growth process.
Type IIa
Light Brown

COLOR

D E F G H I J Faint Very Light Light

CLARITY

FL	IF	VS ¹⁻²	VS ¹⁻²	SI ¹⁻²	I ¹⁻³
Flawless	Internally Flawless	Very Very Slightly Included	Very Slightly Included	Slightly Included	Included

ADDITIONAL GRADING INFORMATION

Polish **VERY GOOD**
Symmetry **VERY GOOD**
Fluorescence **VERY SLIGHT**
Inscription(s) **IGI LG788633521**
Comments: This Laboratory Grown Diamond was created by Chemical Vapor Deposition (CVD) growth process.
Type IIa
Light Brown



IGI



April 11, 2026
IGI Report No LG788633521
ROUND BRILLIANT
7.40 - 7.48 X 4.28 MM
1.49 CARAT
U-V
Color Grade
VS 2
VERY GOOD
57.05%
65%
Thin To Medium (Faceted)
Pointed
VERY GOOD
VERY GOOD
VERY SLIGHT
IGI LG788633521
Comments: This Laboratory Grown Diamond was created by Chemical Vapor Deposition (CVD) growth process.
Type IIa
Light Brown