



April 1, 2026

**IGI Report Number LG788633288**  
**ROUND MODIFIED BRILLIANT**  
**LABORATORY GROWN DIAMOND**  
**4.66 - 4.67 X 2.65 MM**

Carat Weight **0.40 CARAT**  
Color Grade **F**  
Clarity Grade **VS 1**  
Polish **VERY GOOD**  
Symmetry **VERY GOOD**  
Fluorescence **NONE**  
Inscription(s) **IGI LG788633288**

Comments: This Laboratory Grown Diamond was created by Chemical Vapor Deposition (CVD) growth process. Type IIa

**LABORATORY GROWN DIAMOND REPORT**

April 1, 2026  
IGI Report Number **LG788633288**  
Description **LABORATORY GROWN DIAMOND**  
Shape and Cutting Style **ROUND MODIFIED BRILLIANT**  
Measurements **4.66 - 4.67 X 2.65 MM**

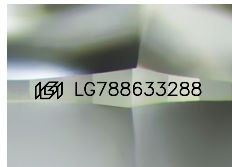
**GRADING RESULTS**

Carat Weight **0.40 CARAT**  
Color Grade **F**  
Clarity Grade **VS 1**

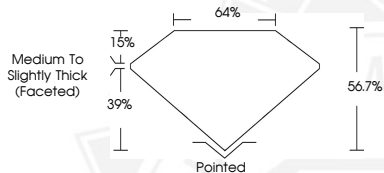
**ADDITIONAL GRADING INFORMATION**

Polish **VERY GOOD**  
Symmetry **VERY GOOD**  
Fluorescence **NONE**  
Inscription(s) **IGI LG788633288**

Comments: This Laboratory Grown Diamond was created by Chemical Vapor Deposition (CVD) growth process.  
Type IIa



Sample Image Used



April 1, 2026

**IGI Report Number LG788633288**  
**ROUND MODIFIED BRILLIANT**  
**LABORATORY GROWN DIAMOND**  
**4.66 - 4.67 X 2.65 MM**

Carat Weight **0.40 CARAT**  
Color Grade **F**  
Clarity Grade **VS 1**  
Polish **VERY GOOD**  
Symmetry **VERY GOOD**  
Fluorescence **NONE**  
Inscription(s) **IGI LG788633288**

Comments: This Laboratory Grown Diamond was created by Chemical Vapor Deposition (CVD) growth process. Type IIa



THIS DOCUMENT WAS PRODUCED WITH THE FOLLOWING SECURITY MEASURES: SPECIAL DOCUMENT PAPER, INK SCREENS, WATERMARK, BACKGROUND DESIGNS, HOLOGRAM AND OTHER SECURITY FEATURES NOT LISTED AND DO EXCEED DOCUMENT SECURITY INDUSTRY GUIDELINES.