



ELECTRONIC COPY

LG788630719
Report verification at igi.org



June 1, 2026

IGI Report Number **LG788630719**

Description **LABORATORY GROWN DIAMOND**

Shape and Cutting Style **ROUND BRILLIANT**

Measurements **7.69 - 7.72 X 4.66 MM**

GRADING RESULTS

Carat Weight **1.70 CARAT**

Color Grade **FANCY VIVID BLUE**

Clarity Grade **VVS 1**

Cut Grade **IDEAL**

June 1, 2026

IGI Report Number **LG788630719**

Description **LABORATORY GROWN DIAMOND**

Shape and Cutting Style **ROUND BRILLIANT**

Measurements **7.69 - 7.72 X 4.66 MM**

GRADING RESULTS

Carat Weight **1.70 CARAT**

Color Grade **FANCY VIVID BLUE**

Clarity Grade **VVS 1**

Cut Grade **IDEAL**

ADDITIONAL GRADING INFORMATION

Polish **EXCELLENT**

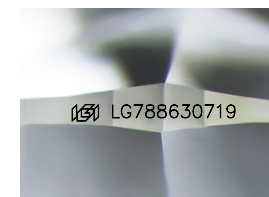
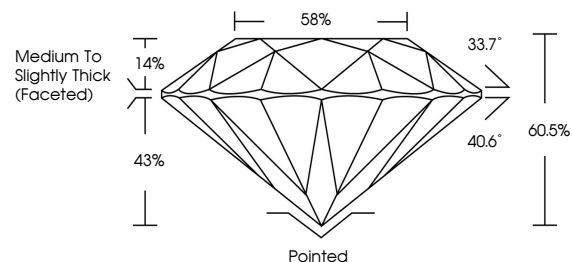
Symmetry **EXCELLENT**

Fluorescence **NONE**

Inscription(s) **IGI LG788630719**

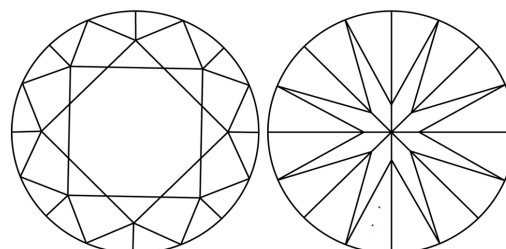
Comments: This Laboratory Grown Diamond was created by High Pressure High Temperature (HPHT) growth process.
Indications of post-growth treatment.

PROPORTIONS



Sample Image Used

CLARITY CHARACTERISTICS



KEY TO SYMBOLS

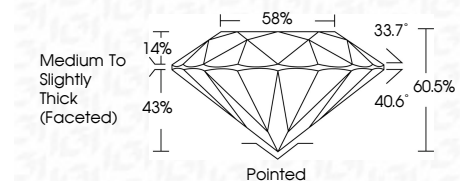
Red symbols indicate internal characteristics.
Green symbols indicate external characteristics.

COLOR

D E F G H I J Faint Very Light Light

CLARITY

FL	IF	VS ¹⁻²	VS ¹⁻²	SI ¹⁻²	I ¹⁻³
Flawless	Internally Flawless	Very Very Slightly Included	Very Slightly Included	Slightly Included	Included



ADDITIONAL GRADING INFORMATION

Polish **EXCELLENT**

Symmetry **EXCELLENT**

Fluorescence **NONE**

Inscription(s) **IGI LG788630719**

Comments: This Laboratory Grown Diamond was created by High Pressure High Temperature (HPHT) growth process.
Indications of post-growth treatment.



IGI



June 1, 2026	IGI Report No LG788630719	1.70 CARAT	FANCY VIVID BLUE	VVS 1	IDEAL	60.5%	88%	Medium To Slightly Thick (Faceted)	Pointed	EXCELLENT	EXCELLENT	NONE	IGI LG788630719
ROUND BRILLIANT	7.69 - 7.72 X 4.66 MM	Color Grade	Cut Grade	Clarity Grade	Depth	Table	Girdle			Polish	Symmetry	Fluorescence	Inscription(s)

Comments: This Laboratory Grown Diamond was created by High Pressure High Temperature (HPHT) growth process. Indications of post-growth treatment.