



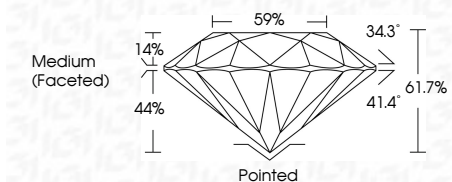
ELECTRONIC COPY

LG788629841 Report verification at igi.org



May 29, 2026 IGI Report Number LG788629841 Description LABORATORY GROWN DIAMOND Shape and Cutting Style ROUND BRILLIANT Measurements 10.23 - 10.27 X 6.32 MM

GRADING RESULTS Carat Weight 4.08 CARATS Color Grade E Clarity Grade VVS 2 Cut Grade IDEAL



ADDITIONAL GRADING INFORMATION Polish EXCELLENT Symmetry EXCELLENT Fluorescence NONE Inscription(s) IGI LG788629841 Comments: This Laboratory Grown Diamond was created by Chemical Vapor Deposition (CVD) growth process. Type IIa



May 29, 2026 IGI Report No LG788629841 ROUND BRILLIANT 10.23 - 10.27 X 6.32 MM 4.08 CARATS E Color Grade VVS 2 IDEAL 61.7% 59% Medium (Faceted) Pointed EXCELLENT EXCELLENT NONE IGI LG788629841 Comments: This Laboratory Grown Diamond was created by Chemical Vapor Deposition (CVD) growth process. Type IIa

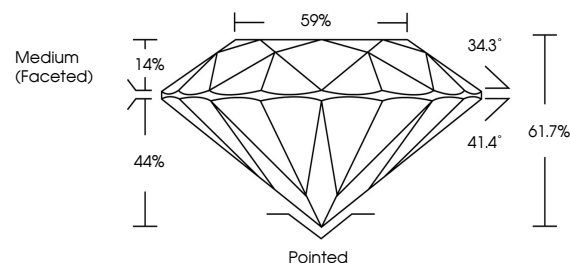
May 29, 2026 IGI Report Number LG788629841 Description LABORATORY GROWN DIAMOND Shape and Cutting Style ROUND BRILLIANT Measurements 10.23 - 10.27 X 6.32 MM

GRADING RESULTS Carat Weight 4.08 CARATS Color Grade E Clarity Grade VVS 2 Cut Grade IDEAL

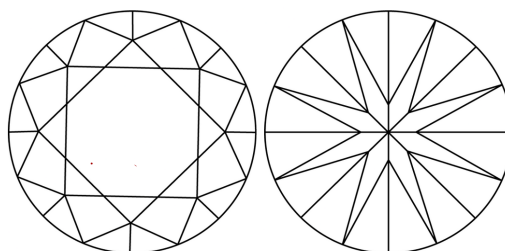
ADDITIONAL GRADING INFORMATION Polish EXCELLENT Symmetry EXCELLENT Fluorescence NONE Inscription(s) IGI LG788629841

Comments: This Laboratory Grown Diamond was created by Chemical Vapor Deposition (CVD) growth process. Type IIa

PROPORTIONS

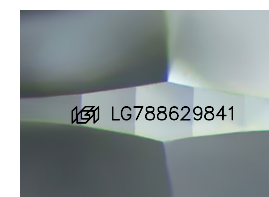


CLARITY CHARACTERISTICS



KEY TO SYMBOLS

Red symbols indicate internal characteristics. Green symbols indicate external characteristics.



Sample Image Used

COLOR

D E F G H I J Faint Very Light Light

CLARITY

FL IF VVS 1-2 VS 1-2 SI 1-2 I 1-3 Flawless Internally Flawless Very Very Slightly Included Very Slightly Included Slightly Included Included

