



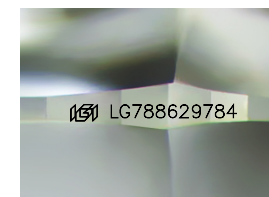
**ELECTRONIC COPY**

LG788629784  
Report verification at igi.org



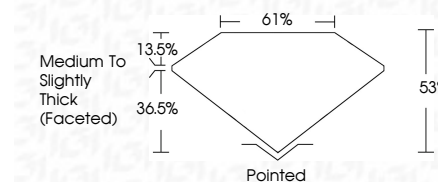
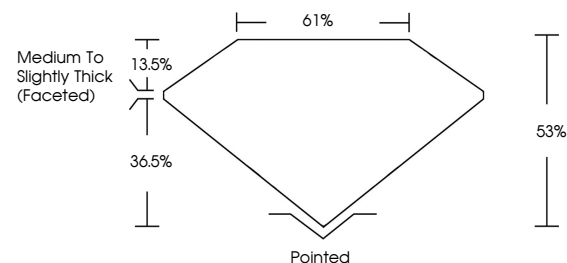
May 28, 2026  
IGI Report Number **LG788629784**  
Description **LABORATORY GROWN DIAMOND**  
Shape and Cutting Style **MODIFIED TRILLIANT CUT**  
Measurements **10.71 X 10.12 X 5.36 MM**

**GRADING RESULTS**  
Carat Weight **3.52 CARATS**  
Color Grade **G**  
Clarity Grade **VVS 2**

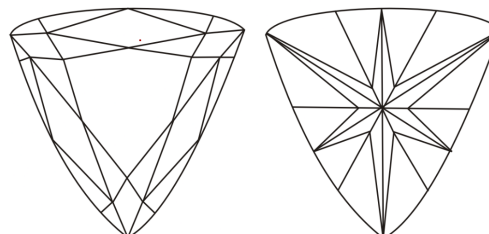


Sample Image Used

**PROPORTIONS**



**CLARITY CHARACTERISTICS**



**KEY TO SYMBOLS**

Red symbols indicate internal characteristics.  
Green symbols indicate external characteristics.

**COLOR**

D E F G H I J Faint Very Light Light

**CLARITY**

FL	IF	VS <sup>1-2</sup>	VS <sup>1-2</sup>	SI <sup>1-2</sup>	I <sup>1-3</sup>
Flawless	Internally Flawless	Very Very Slightly Included	Very Slightly Included	Slightly Included	Included

**ADDITIONAL GRADING INFORMATION**

Polish **EXCELLENT**  
Symmetry **EXCELLENT**  
Fluorescence **NONE**  
Inscription(s) **IGI LG788629784**  
Comments: This Laboratory Grown Diamond was created by Chemical Vapor Deposition (CVD) growth process.  
Type IIa



**IGI**



May 28, 2026  
IGI Report No **LG788629784**  
**MODIFIED TRILLIANT CUT**  
**10.71 X 10.12 X 5.36 MM**  
**3.52 CARATS**  
Color Grade **G**  
Clarity Grade **VVS 2**  
Depth **53%**  
Table **61%**  
Girdle **Medium to Slightly Thick (Faceted)**  
Culet **Pointed**  
Polish **EXCELLENT**  
Symmetry **EXCELLENT**  
Fluorescence **NONE**  
Inscription(s) **IGI LG788629784**

Comments: This Laboratory Grown Diamond was created by Chemical Vapor Deposition (CVD) growth process.  
Type IIa