



ELECTRONIC COPY

LG788629602
Report verification at igi.org



May 29, 2026
IGI Report Number **LG788629602**
Description **LABORATORY GROWN DIAMOND**
Shape and Cutting Style **ROUND BRILLIANT**
Measurements **6.77 - 6.83 X 4.24 MM**
GRADING RESULTS
Carat Weight **1.22 CARAT**
Color Grade **FANCY VIVID YELLOW**
Clarity Grade **VS 1**
Cut Grade **IDEAL**

May 29, 2026
IGI Report Number **LG788629602**
Description **LABORATORY GROWN DIAMOND**
Shape and Cutting Style **ROUND BRILLIANT**
Measurements **6.77 - 6.83 X 4.24 MM**

GRADING RESULTS

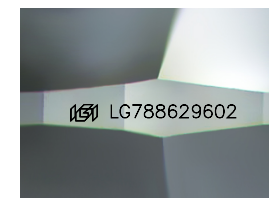
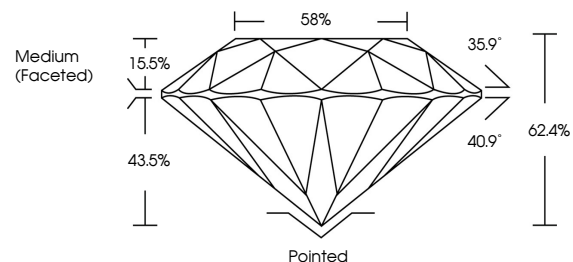
Carat Weight **1.22 CARAT**
Color Grade **FANCY VIVID YELLOW**
Clarity Grade **VS 1**
Cut Grade **IDEAL**

ADDITIONAL GRADING INFORMATION

Polish **EXCELLENT**
Symmetry **EXCELLENT**
Fluorescence **NONE**
Inscription(s) **LG788629602**

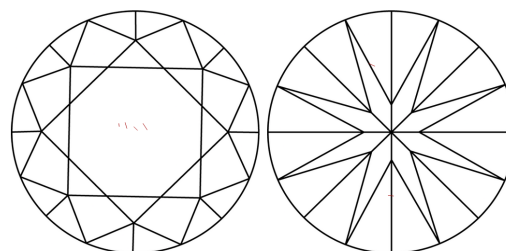
Comments: As Grown - No indication of post-growth treatment.
This Laboratory Grown Diamond was created by High Pressure High Temperature (HPHT) growth process.

PROPORTIONS



Sample Image Used

CLARITY CHARACTERISTICS



KEY TO SYMBOLS

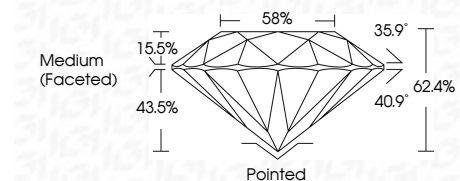
Red symbols indicate internal characteristics.
Green symbols indicate external characteristics.

COLOR

D E F G H I J Faint Very Light Light

CLARITY

FL	IF	VS ¹⁻²	VS ¹⁻²	SI ¹⁻²	I ¹⁻³
Flawless	Internally Flawless	Very Very Slightly Included	Very Slightly Included	Slightly Included	Included



ADDITIONAL GRADING INFORMATION

Polish **EXCELLENT**
Symmetry **EXCELLENT**
Fluorescence **NONE**
Inscription(s) **LG788629602**
Comments: As Grown - No indication of post-growth treatment.
This Laboratory Grown Diamond was created by High Pressure High Temperature (HPHT) growth process.



IGI

May 29, 2026
IGI Report No LG788629602
ROUND BRILLIANT
6.77 - 6.83 X 4.24 MM
1.22 CARAT
FANCY VIVID YELLOW
VS 1
IDEAL
62.4%
58%
Medium (Faceted)Pointed
EXCELLENT
EXCELLENT
NONE
None
IGI LG788629602
Comments: As Grown - No indication of post-growth treatment.
This Laboratory Grown Diamond was created by High Pressure High Temperature (HPHT) growth process.