



ELECTRONIC COPY

LG788629571
Report verification at igi.org



May 29, 2026
IGI Report Number **LG788629571**
Description **LABORATORY GROWN DIAMOND**
Shape and Cutting Style **CUT CORNERED
RECTANGULAR MODIFIED
BRILLIANT**
Measurements **7.76 X 5.66 X 3.90 MM**
GRADING RESULTS
Carat Weight **1.53 CARAT**
Color Grade **FANCY VIVID BLUE**
Clarity Grade **VVS 1**

LABORATORY GROWN DIAMOND REPORT

May 29, 2026
IGI Report Number **LG788629571**
Description **LABORATORY GROWN DIAMOND**
Shape and Cutting Style **CUT CORNERED RECTANGULAR
MODIFIED BRILLIANT**
Measurements **7.76 X 5.66 X 3.90 MM**

GRADING RESULTS

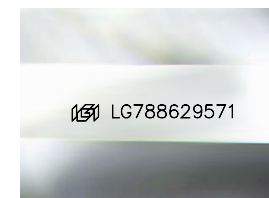
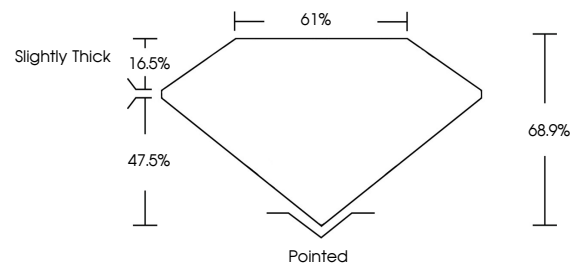
Carat Weight **1.53 CARAT**
Color Grade **FANCY VIVID BLUE**
Clarity Grade **VVS 1**

ADDITIONAL GRADING INFORMATION

Polish **EXCELLENT**
Symmetry **EXCELLENT**
Fluorescence **NONE**
Inscription(s) **IGI LG788629571**

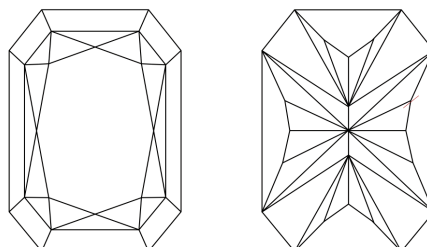
Comments: This Laboratory Grown Diamond was created by High Pressure High Temperature (HPHT) growth process.
Indications of post-growth treatment.

PROPORTIONS



Sample Image Used

CLARITY CHARACTERISTICS



KEY TO SYMBOLS

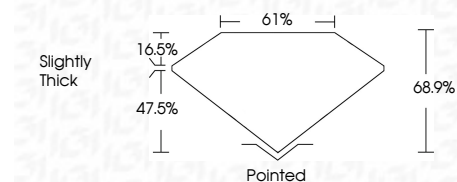
Red symbols indicate internal characteristics.
Green symbols indicate external characteristics.

COLOR

D E F G H I J Faint Very Light Light

CLARITY

FL	IF	VVS ¹⁻²	VS ¹⁻²	SI ¹⁻²	I ¹⁻³
Flawless	Internally Flawless	Very Very Slightly Included	Very Slightly Included	Slightly Included	Included



ADDITIONAL GRADING INFORMATION

Polish **EXCELLENT**
Symmetry **EXCELLENT**
Fluorescence **NONE**
Inscription(s) **IGI LG788629571**
Comments: This Laboratory Grown Diamond was created by High Pressure High Temperature (HPHT) growth process.
Indications of post-growth treatment.



IGI



May 29, 2026
IGI Report No LG788629571
CUT CORNERED RECT. MODIFIED BRILLIANT
7.76 X 5.66 X 3.90 MM
1.53 CARAT
FANCY VIVID BLUE
VVS 1
68.9%
61%
Slightly Thick
Pointed
EXCELLENT
EXCELLENT
NONE
IGI LG788629571

Comments: This Laboratory Grown Diamond was created by High Pressure High Temperature (HPHT) growth process.
Indications of post-growth treatment.