



ELECTRONIC COPY

LG788628643
Report verification at igi.org



May 27, 2026

IGI Report Number **LG788628643**

Description **LABORATORY GROWN DIAMOND**

Shape and Cutting Style **EMERALD CUT**

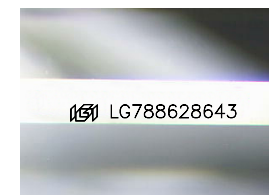
Measurements **9.89 X 6.86 X 4.50 MM**

GRADING RESULTS

Carat Weight **3.02 CARATS**

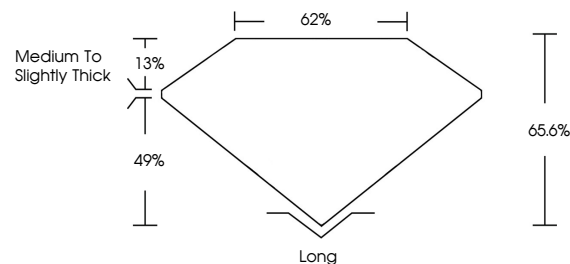
Color Grade **FANCY INTENSE PINK**

Clarity Grade **VS 1**

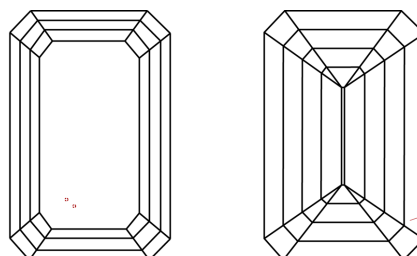


Sample Image Used

PROPORTIONS



CLARITY CHARACTERISTICS



KEY TO SYMBOLS

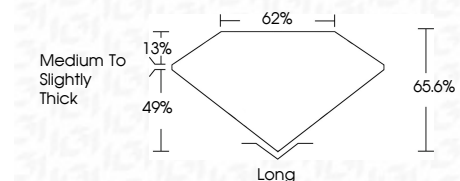
Red symbols indicate internal characteristics.
Green symbols indicate external characteristics.

COLOR

D E F G H I J Faint Very Light Light

CLARITY

FL	IF	VS ¹⁻²	VS ¹⁻²	SI ¹⁻²	I ¹⁻³
Flawless	Internally Flawless	Very Very Slightly Included	Very Slightly Included	Slightly Included	Included



ADDITIONAL GRADING INFORMATION

Polish **EXCELLENT**

Symmetry **EXCELLENT**

Fluorescence **STRONG**

Inscription(s) **IGI LG788628643**

Comments: This Laboratory Grown Diamond was created by Chemical Vapor Deposition (CVD) growth process. Indications of post-growth treatment.



May 27, 2026
IGI Report No. LG788628643
EMERALD CUT
3.02 CARATS
9.89 X 6.86 X 4.50 MM
FANCY INTENSE PINK
VS 1
65.6%
62%
Medium to Slightly Thick
Long
EXCELLENT
EXCELLENT
STRONG
IGI LG788628643

Comments: This Laboratory Grown Diamond was created by Chemical Vapor Deposition (CVD) growth process. Indications of post-growth treatment.