



ELECTRONIC COPY

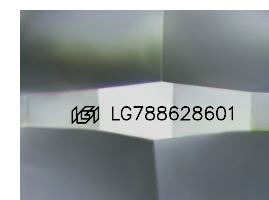
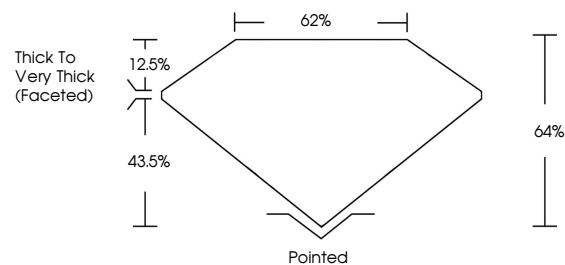
LG788628601 Report verification at igi.org



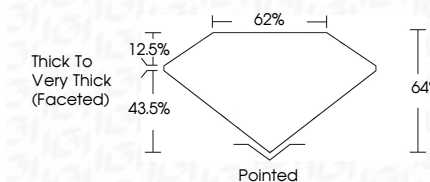
May 27, 2026 IGI Report Number LG788628601 Description LABORATORY GROWN DIAMOND Shape and Cutting Style SQUARE CUSHION MODIFIED BRILLIANT Measurements 7.05 X 6.81 X 4.36 MM GRADING RESULTS Carat Weight 1.92 CARAT Color Grade FANCY VIVID PINK Clarity Grade VVS 2

May 27, 2026 IGI Report Number LG788628601 Description LABORATORY GROWN DIAMOND Shape and Cutting Style SQUARE CUSHION MODIFIED BRILLIANT Measurements 7.05 X 6.81 X 4.36 MM

PROPORTIONS



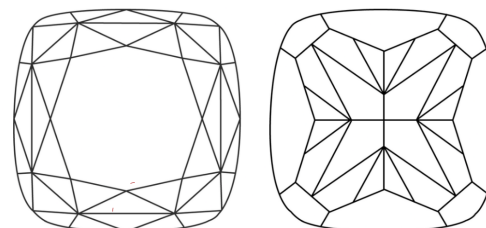
Sample Image Used



GRADING RESULTS

Carat Weight 1.92 CARAT Color Grade FANCY VIVID PINK Clarity Grade VVS 2

CLARITY CHARACTERISTICS



COLOR

D E F G H I J Faint Very Light Light

CLARITY

FL IF VVS 1-2 VS 1-2 SI 1-2 I 1-3 Flawless Internally Flawless Very Very Slightly Included Very Slightly Included Slightly Included Included

ADDITIONAL GRADING INFORMATION

Polish EXCELLENT Symmetry EXCELLENT Fluorescence STRONG Inscription(s) IGI LG788628601

ADDITIONAL GRADING INFORMATION

Polish EXCELLENT Symmetry EXCELLENT Fluorescence STRONG Inscription(s) IGI LG788628601

Comments: This Laboratory Grown Diamond was created by Chemical Vapor Deposition (CVD) growth process. Indications of post-growth treatment.

Comments: This Laboratory Grown Diamond was created by Chemical Vapor Deposition (CVD) growth process. Indications of post-growth treatment.

KEY TO SYMBOLS

Red symbols indicate internal characteristics. Green symbols indicate external characteristics.



May 27, 2026 IGI Report No LG788628601 SQUARE CUSHION MODIFIED BRILLIANT 1.92 CARAT FANCY VIVID PINK VVS 2 7.05 X 6.81 X 4.36 MM Thick to Very Thick (Faceted) Pointed EXCELLENT EXCELLENT STRONG IGI LG788628601 Comments: This Laboratory Grown Diamond was created by Chemical Vapor Deposition (CVD) growth process. Indications of post-growth treatment.