



ELECTRONIC COPY

LABORATORY GROWN DIAMOND REPORT

April 23, 2026
IGI Report Number LG788628502
Description LABORATORY GROWN DIAMOND
Shape and Cutting Style CUT CORNERED RECTANGULAR MIXED CUT
Measurements 9.28 X 6.60 X 4.41 MM

GRADING RESULTS

Carat Weight 2.58 CARATS
Color Grade FANCY INTENSE YELLOW
Clarity Grade VVS 2

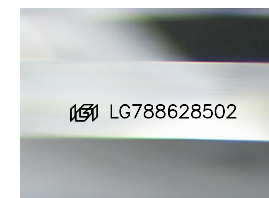
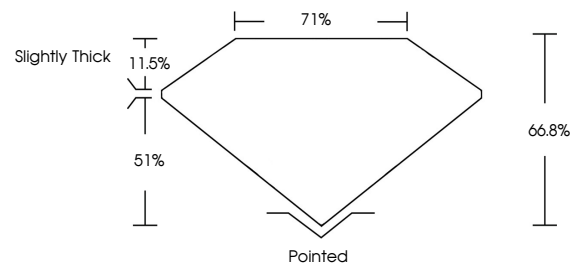
ADDITIONAL GRADING INFORMATION

Polish EXCELLENT
Symmetry EXCELLENT
Fluorescence NONE

Inscription(s) LG788628502

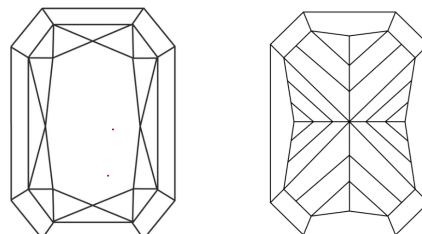
Comments: This Laboratory Grown Diamond was created by Chemical Vapor Deposition (CVD) growth process.

PROPORTIONS



Sample Image Used

CLARITY CHARACTERISTICS



KEY TO SYMBOLS

Red symbols indicate internal characteristics.
Green symbols indicate external characteristics.

COLOR

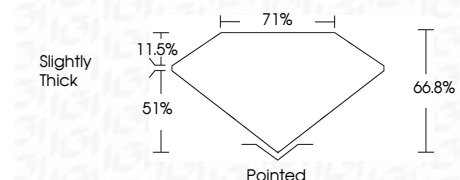
D E F G H I J Faint Very Light Light

CLARITY

FL IF VVS¹⁻² VS¹⁻² SI¹⁻² I¹⁻³
Flawless Internally Flawless Very Very Slightly Included Very Slightly Included Slightly Included Included



April 23, 2026
IGI Report Number LG788628502
Description LABORATORY GROWN DIAMOND
Shape and Cutting Style CUT CORNERED RECTANGULAR MIXED CUT
Measurements 9.28 X 6.60 X 4.41 MM
GRADING RESULTS
Carat Weight 2.58 CARATS
Color Grade FANCY INTENSE YELLOW
Clarity Grade VVS 2



ADDITIONAL GRADING INFORMATION

Polish EXCELLENT
Symmetry EXCELLENT
Fluorescence NONE
Inscription(s) LG788628502
Comments: This Laboratory Grown Diamond was created by Chemical Vapor Deposition (CVD) growth process.



April 23, 2026
IGI Report No LG788628502
CUT CORNERED RECT. MIXED CUT
9.28 X 6.60 X 4.41 MM
2.58 CARATS
FANCY INTENSE YELLOW
VVS 2
66.8%
71%
Slightly Thick
Pointed
EXCELLENT
EXCELLENT
NONE
Inscription(s) LG788628502
Comments: This Laboratory Grown Diamond was created by Chemical Vapor Deposition (CVD) growth process.